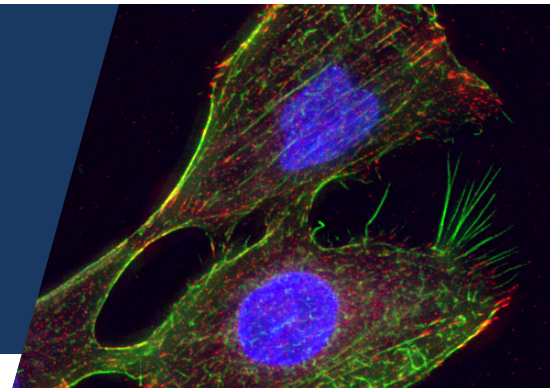




# Cellular Imaging Equipment

FRED HUTCHINSON CANCER RESEARCH CENTER  
SEATTLE, WA • 501(C)(3) NONPROFIT



## FOR MORE INFORMATION

Cellular Imaging  
206.667.1215

[imaging@fredhutch.org](mailto:imaging@fredhutch.org)

## Typhoon Trio imager

Multimode scientific scanner for fluorescence, chemiluminescence and radioactivity (phosphorimager) detection

### Location and use:

- Thomas Building, DE-341
- Used on a first-come, first-serve basis. Please book if you will need the instrument for more than 30 minutes so other users know its availability.

**Excitation sources:** Lasers: 488, 532, 640 nm

### Capabilities

Scientific scanner for phosphorimager (radioactivity), fluorescence and chemiluminescence

### Recommended uses

- Imaging and quantitation of radioactivity, fluorescence and chemiluminescence
- Gel and blot imaging
- Alternative to fluorescence plate reader
- DNA gels (Southern blots)
- Western blots

### General information:

The Typhoon Trio is a versatile instrument for the imaging of radioactive samples using Phosphor screen technology, as well as fluorescence imaging of green, red and far red dyes. Imaging of chemiluminescent samples is also possible. The instrument can scan gels, blots, multi-well plates and various other sample formats at resolutions down to 25 microns.

Images can be analyzed and quantitated with ImageQuant TL or with the public-domain ImageJ software package. A multi-user ImageQuant TL license is available for off-line data analysis. The instrument includes 488, 532 and 640 nm lasers for fluorescence imaging. Phosphor screens and cassettes for the imaging of radioactive samples are available. Special screens for Tritium imaging available upon request.

### Gel and blot scanners

Scanners are used on a first-come, first-serve basis. Please book if you will need the instrument for more than 30 minutes so that other users know its availability. If you want Cellular Imaging staff to scan your gel, please submit a request.