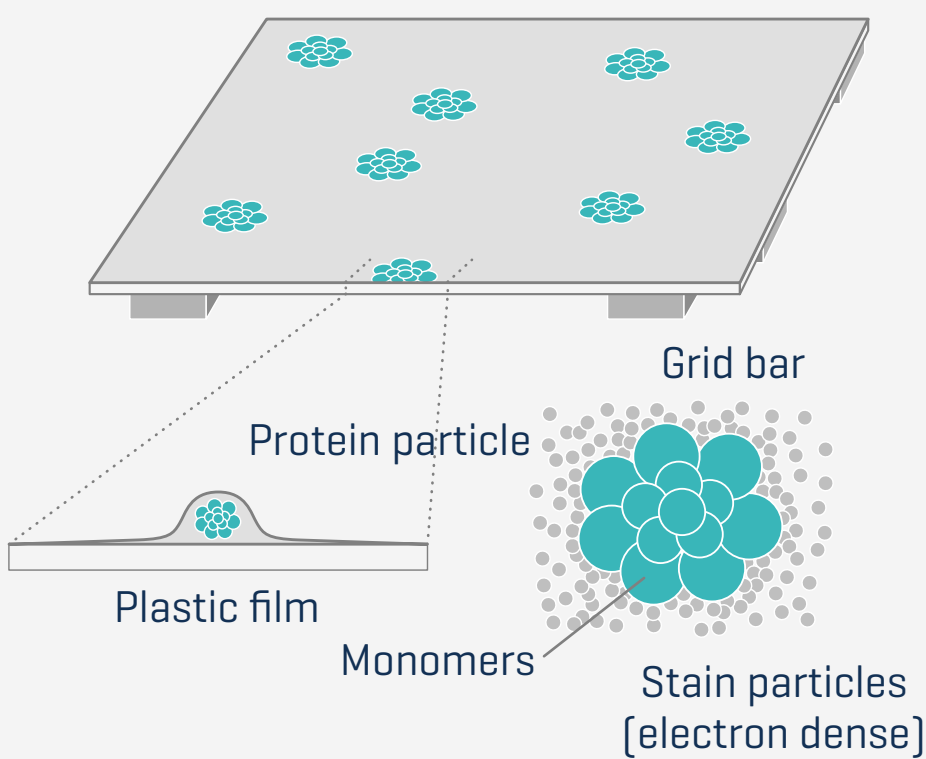


Biological sample and buffer optimization

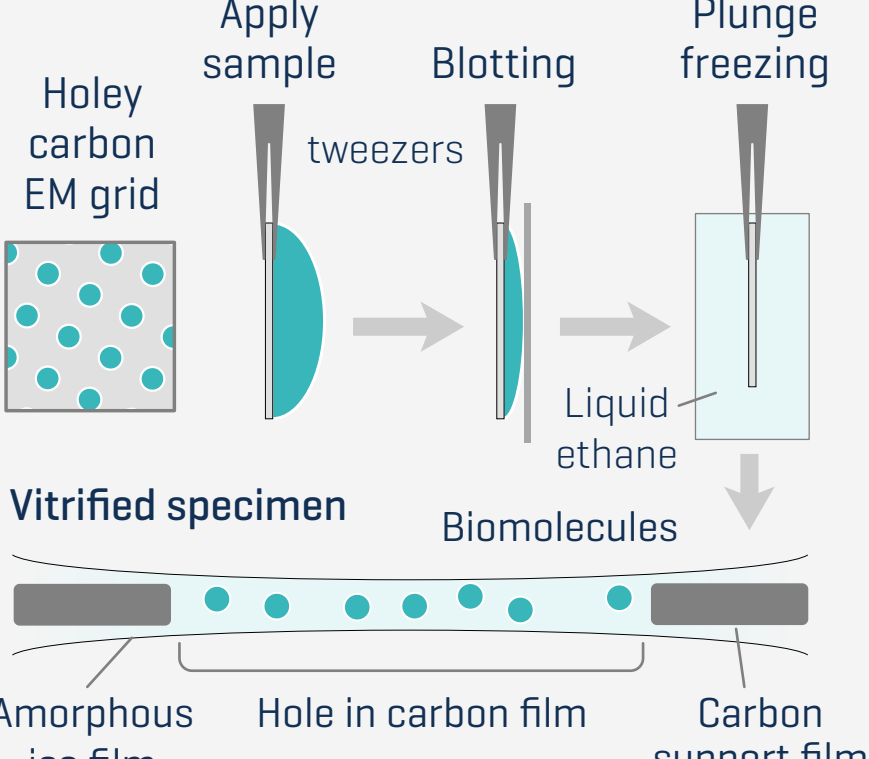
Sample Prep Services and Training

Negative Stain



Source: University of Delaware

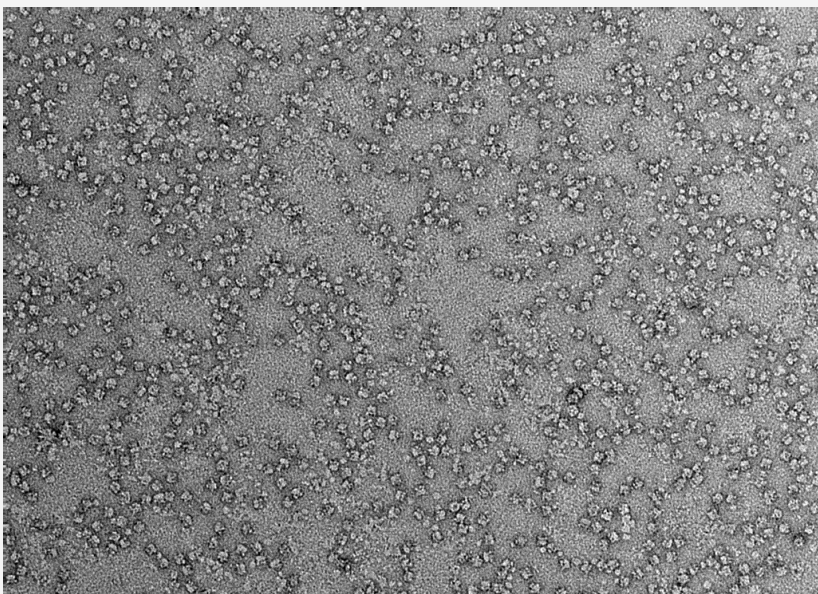
Vitrification



Source: Biochimica et Biophysica Acta [BBA]; Kazuyoshi Murata and Matthias Wolf

Data Collection Services and Training

Negative-stain imaging  
on Talos L120C/Ceta 16M



Cryo-EM imaging  
on Glacios/K3

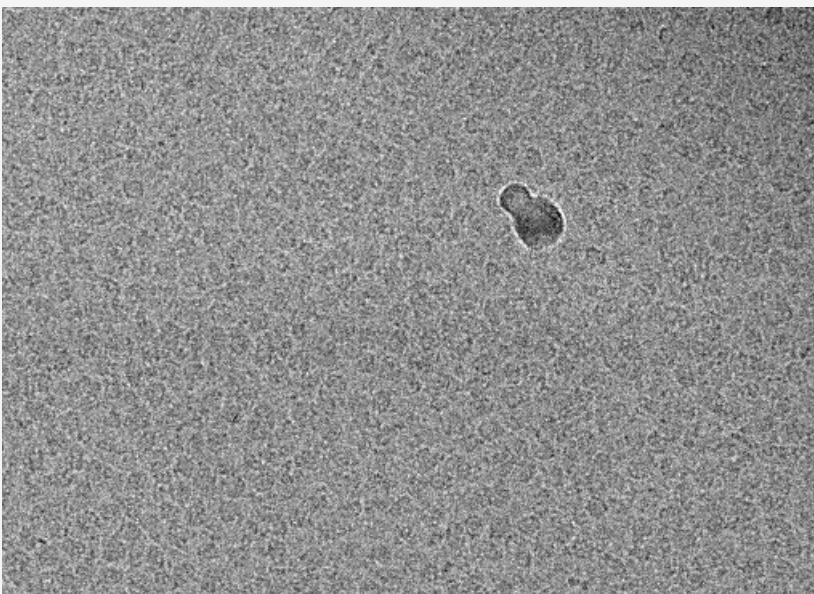


Image Processing Services and Training

Negative stain  
2D class  
averages  
processed by  
Cryo-EM SR  
staff members

Further  
processing and  
data storage by  
users on personal  
workstations or  
CIT-managed  
HPC

OFFICE HOURS

Cryo-EM  
via Zoom

CIT via  
MS Teams

Micrograph selection

Particle picking  
and selection

2D classification

3D initial model

3D classification

3D refinement

Polishing [optional]

Local refinement

Postprocessing

Final map for modeling  
and interpretation

Modeling

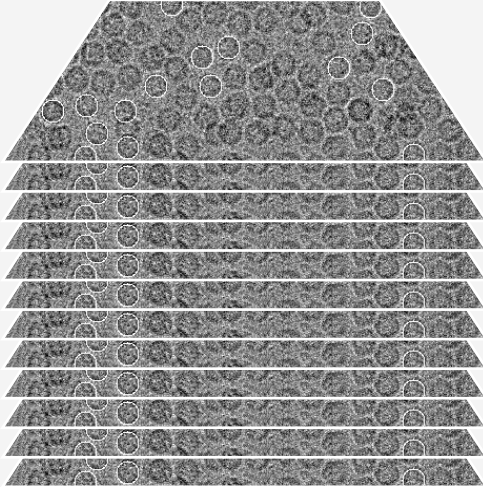
Modeling refinement

Final map  
for interpretation

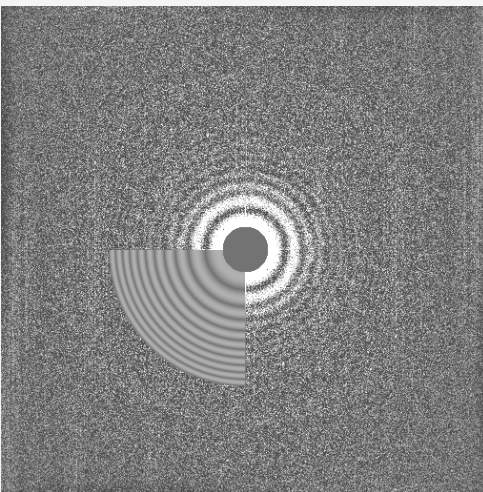
Image Processing  
Services

On-the-fly  
preprocessing on  
4-GPU workstation  
[WARP]

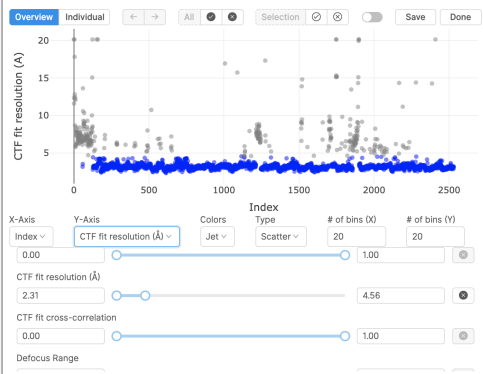
Motion-correction



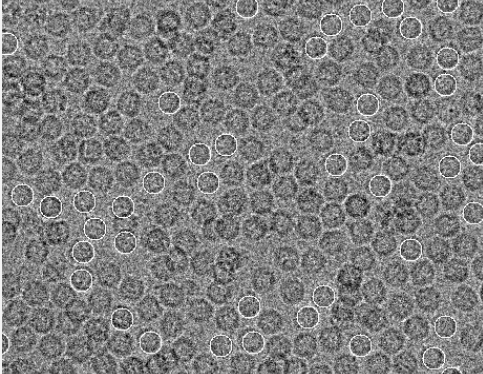
CTF estimation



Data evaluation



Particle picking



2D classification

