



FRED HUTCH™
CURES START HERE

Training Program in
Infectious Diseases in the
Immunocompromised Host

Program Brochure

Fred Hutchinson
Cancer Research
Center

OVERVIEW

Program Description

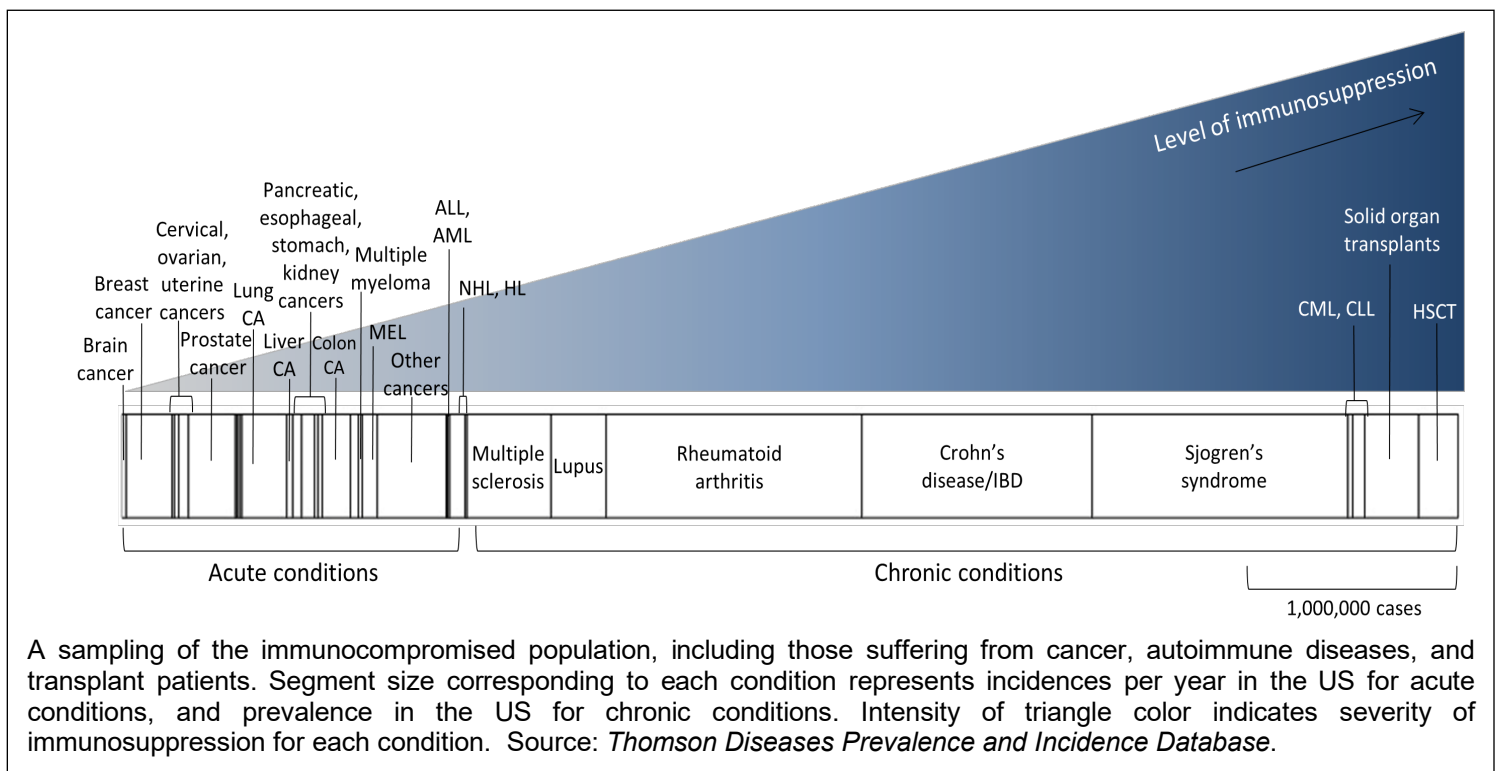
ABOUT THE TRAINING PROGRAM

The Training Program in Infectious Diseases in the Immunocompromised Host has been established to train MD and PhD students to perform clinically relevant research in infectious diseases within the immunocompromised population.

THE RATIONALE

The overall burden of infectious diseases is on the rise. A 2007 WHO report warned that infectious diseases are spreading more rapidly than ever before, and new infectious diseases are being discovered at an unprecedented rate.

The proportion of the US population experiencing immunosuppression is also rising, partly attributed to the advancement of solid organ and hematopoietic stem cell transplantation techniques, therapies for autoimmune diseases, and immunosenescence (immunosuppression due to aging). Cancers and numerous immunologic disorders may also be linked to more specific or limited forms of immunocompromise, either by the immunosuppression caused directly by the disease or through the use of additional immunosuppressive treatments. This high-risk population experiences an increased risk of infectious diseases. Moreover, the outcomes of such infections and conditions, even those otherwise considered benign in healthy patients, can cause severe morbidity and mortality in the immunosuppressed.



This is a problem for which society demands effective and innovative solutions, and we aim to address it by providing the next generation of physician and postdoctoral scientists with specialized training in infectious diseases in immunocompromised hosts.

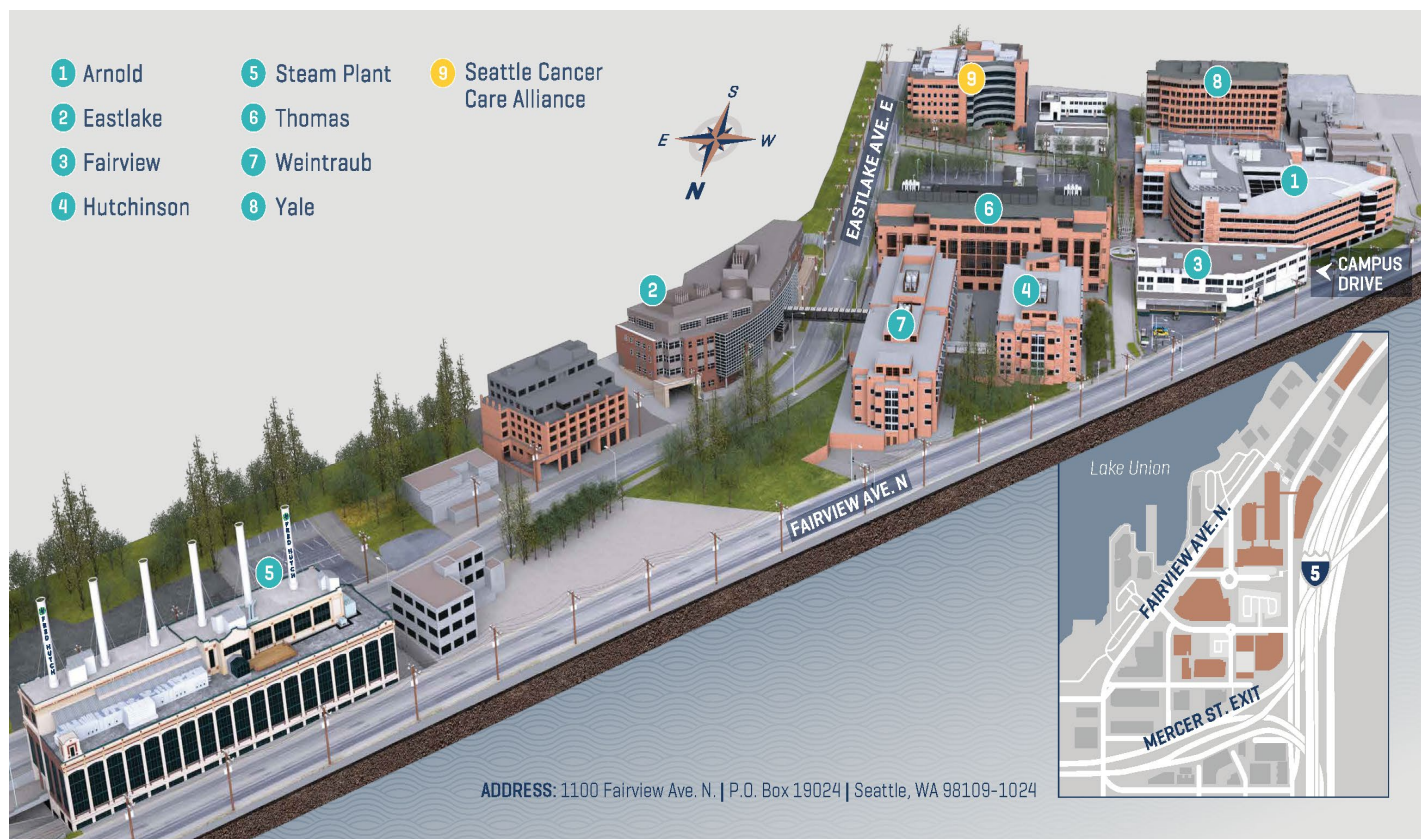
FRED HUTCHINSON CANCER RESEARCH CENTER AND THE SEATTLE CANCER CARE ALLIANCE

Fred Hutchinson Cancer Research Center (**Fred Hutch**) is a premier research institution in Seattle, Washington. Our interdisciplinary teams of scientists conduct research in the laboratory, at patient bedside, and in communities throughout the world to advance the prevention, early detection, and treatment of cancer and other diseases. Our researchers, including three Nobel laureates, bring a relentless pursuit of, and passion for, health knowledge and hope to their work and the world.

To accelerate the progress of clinical research, we are part of the Fred Hutchinson Cancer Research Center/University of Washington/Seattle Children's Cancer Consortium, or Seattle Cancer Care Alliance, a.k.a. **SCCA**. This research and clinical collaboration enables our scientists to leverage each institution's strengths and develop premier research programs across many types of diseases. Furthermore, this consortium is among 40 National Cancer Institute-designated comprehensive cancer centers in the United States.

Our consortium partners' campuses are located within Seattle city limits and are linked by free shuttle services between campuses to promote interdisciplinary research and full access to consortium resources. The proximity of Fred Hutch, the University of Washington, Seattle Children's, and the SCCA, both physically and institutionally, provides an amazing support system and plethora of resources for researchers.

A 3-D Map of Fred Hutchinson Cancer Research Center and the Seattle Cancer Care Alliance



INFECTIOUS DISEASE SCIENCES PROGRAM (IDS) OF THE VACCINE AND INFECTIOUS DISEASE DIVISION (VIDD)

INFECTIOUS DISEASE SCIENCES PROGRAM (IDS)

The Training Program in Infectious Diseases in the Immunocompromised Host is based in the Infectious Disease Sciences Program (**IDS**) of VIDD with close collaborations and interactions with other divisions as well as various departments and units within the University of Washington and Seattle Children's.

Established in the 1980s at Fred Hutch, IDS has been home to many major innovative programs, including projects to study herpesvirus infections, respiratory viruses, invasive fungal disease, the microbiome and its role in human disease, HIV vaccine research, infection-related cancers, and infection control and hospital epidemiology.

Our researchers conduct interdisciplinary collaborative research and training at the highest level of excellence. The IDS Program has strong and long-standing collaborations and partnerships with multiple stakeholders, including patients and researchers, physicians and medical centers, data scientists and policy makers, industry sponsors, and federal agencies.

IDS's mission is to advance knowledge of host-pathogen interactions and develop innovative management strategies for infectious diseases in immunocompromised and immunocompetent persons.

VACCINE AND INFECTIOUS DISEASE DIVISION (VIDD)

Fred Hutch comprises of five scientific divisions: Basic Sciences, Clinical Research, Human Biology, Public Health Sciences, and Vaccine and Infectious Disease (**VIDD**). VIDD's mission is to develop treatments and prevention strategies that counter infectious diseases throughout the world. Investigators working in VIDD research the human immune system, pathogens, and vaccines via statistical, clinical, and laboratory science. VIDD comprises several programs: Infectious Disease Sciences; Biostatistics, Bioinformatics and Epidemiology, which includes the Statistical Center for HIV and AIDS Research and Prevention (SCHARP); Immunology and Vaccine Development; and Global Oncology.

VIDD is home to one of the world's largest HIV research units and is the hub of the international HIV Vaccine Trials Network (HVTN), a global effort to develop and test a successful HIV vaccine. We have also been making a global impact with our prevention and treatment work by initiating collaborations with global partners such as the Uganda Cancer Institute, the Cape Town HVTN Immunology Laboratory in South Africa, and the China CDC.

THE GOAL

The mission of our training program is to develop the next generation of physician and postdoctoral scientists with expertise in infectious diseases in the immunocompromised host. Our goal is to provide rigorous and interdisciplinary training to foster innovative and collaborative research in infectious diseases in the transplant setting and other known and emerging areas of immunosuppression. We aim to train individuals who will use that expertise to advance knowledge and develop innovative strategies to prevent, treat and control these infections. Fred Hutch, with its variety of resources and established training success, is uniquely suited to this goal.

THE CURRICULUM

The core curriculum for the training program includes formal courses, didactic exercises and conferences that are important for all trainees regardless of their degree or research interests/projects. Some of the training is skills-based and covers key learning objectives, while others involve attendance and interactive research-focused group events.

CORE EXPECTATIONS

- Participation in core curriculum components.
- Development of critical skills in research methodologies relevant to an individual discipline or track.
- Development of skills in presenting research. All trainees are expected to present their research at local, national, and sometimes international meetings.
- Development of skills in scientific writing. A critical goal of this training program is to nurture skills in writing scientific papers, research proposals, and grant applications.

CORE CURRICULUM ELEMENTS

Orientation Course in Infections in Immunocompromised Hosts

All new trainees attend a one day orientation course in which program faculty and track leaders address research in immunocompromised hosts, in addition to human subjects training. The course also introduces trainees to faculty members and to one another.

Annual Retreat on Infections in Immunocompromised Hosts

The program hosts an all-day research retreat. All of the training program faculty and trainees are encouraged to attend. MD and PhD scientists supported on the training grant (as well as others receiving training in the field, e.g., international scientists) present their on-going research for discussion. All presenters receive immediate feedback on their presentations from at least two program faculty. The feedback and discussion are meant to further develop individual skills in presentation, data analysis, and interaction with other scientists.

Annual IDS and Virology Symposium

Physicians, scientists and trainees of Fred Hutch's IDS Program and the UW Virology Division come together for a joint symposium to share and celebrate research progress. Each T32 trainee gives an oral presentation on their research. EAC members also meet to discuss trainee progress and evaluate the training program.

Symposium on Infectious Diseases of the Immunocompromised Host

This symposium occurs biennially, and we hosted this event for the third time in June 2019. The two-day program features lectures by thought leaders in the field and early-career, rising star investigators. Trainees are encouraged to present their original research through short oral presentations or as part of our lively, interactive poster session. Networking opportunities include small group mentoring dinners.

Allergy and Infectious Disease Orientation Course for MD Fellows

MD fellows also attend a two-week orientation course covering a broad range of clinical ID topics at the beginning of their clinical years (which precedes the start of the research fellowship covered by this program).

Research in Progress Reporting and Participation

Each trainee will attend research in progress meetings with their mentors. In addition, trainees are required to present at least once every year their research progress at either an internal or external conference or lecture series that focuses on infections in the immunocompromised host.

Affinity Groups on Infectious Disease in the Immunocompromised Host and Mathematical Modeling

These groups meet throughout the year, featuring presentations by leading experts in these focus areas. Our T32 trainees and faculty are strongly encouraged to attend, and these events are open to all trainees, faculty, and staff in our scientific community.

Vaccine and Infectious Disease Division Seminar Series

This weekly seminar series at Fred Hutch features research presentations from faculty, scientists, senior fellows/postdocs, and guest speakers on a broad range of topics including infectious diseases, immunology and biostatistics.

Solid Organ Transplantation (SOT) Grand Rounds

The weekly seminars cover topics in SOT including infectious disease and immunology topics, featuring both local and external speakers.

Fred Hutch Research Ethics Education Program

Fred Hutch-based trainees (postdoctoral researchers, clinical fellows, and graduate students) are required, during their tenure at Fred Hutch, to attend six approved events. One of the six events must be a case study discussion group.

ITHS Clinical and Translational Boot Camp

This two-day course introduces ID fellows to the latest information about clinical and translational research, including observational studies and clinical trials.

Targeted Lectures and Workshops on Key Skills and Methodologies

Trainees are strongly encouraged to attend these courses, which have been developed to build key skills that will provide a strong foundation for trainees' burgeoning research careers.

- *State-of-the-Art Statistical Methodology.* This newly-developed course will introduce T32 trainees to state-of-the-art methods, technologies, and analyses, with a focus on high-throughput and high-dimensional assays. It will be led by T32 Senior Mentor and Fred Hutch Biostatistics Faculty member Dr. Olivier Hyrien.
- *Journal Club* on infections in the immunocompromised host. At this monthly forum, T32 faculty guide our T32 trainees in discussing scientific articles relevant to their projects, with a specific focus on methods. Faculty provide supplementary information about rigorous methodology and analysis as needed. All faculty and trainees working in the field are invited. Our journal club takes place at faculty members' homes to foster strong relationships between training program faculty and trainees and also interactions among faculty.
- *Manuscript Writing Boot Camp.* Trainees are invited to this dedicated writing time, to make progress on and receive feedback on manuscripts. Senior program faculty as well as Ashley Sherrid, Technical Editor with the IDS program, will also be available to provide individualized instruction and support.
- *Foundations in Biostatistics and Clinical Trials.* This course introduces Fred Hutch fellows to biostatistics and clinical trials. It is taught by Dr. Ted Gooley, T32 Supporting Mentor and Fred Hutch/UW Biostatistics Faculty.

Joint Opportunities with Related Programs

Our T32 program has teamed up with complementary UW/Fred Hutch training grant programs to host two, half-day joint retreats that feature research presentations by T32 recipient-trainees, aimed exposing our trainees to key related fields of research. The Annual Oncology Research Training Retreat includes T32 and K12 recipient-trainees in medical oncology, gynecologic oncology, pediatric oncology, and infectious disease. Similarly, the Joint Retreat on Host Defense and Infectious Disease in the Immunocompromised Host (held for the first time in November 2019, with a virtual event planned for November 2020) includes T32 recipient-trainees in immunology, host-pathogen interactions, and infectious disease, as they relate to immunocompromised hosts.

Additionally, several linkages with the pediatric ID fellowship program have been developed to benefit both programs. Due to these linkages, both pediatric and adult ID fellows participate in most elements of the Core Curriculum, including orientation sessions, weekly conferences, an annual research retreat and journal clubs. Two pediatric faculty serve as mentors in this program (Dr. Englund, Dr. Waghmare).

Grant Writing

We expect and strongly support grant writing at different levels: internal pilot grants, foundation and fellowship grants, loan repayment grants (if applicable), and, ultimately a career development (e.g., K award) project. Grant writing seminars are available at Fred Hutch and the UW, and senior mentors are available for input and grant review.

Didactic or Graduate Courses

MDs participating in **Tracks 1** will have the opportunity to obtain a master's degree in epidemiology at the UW. The UW-based Institute of Translational Health Sciences (ITHS) offers reduced tuition for Fred Hutch-based program participants. Alternatively, the Harvard School of Public Health offers a summer program in clinical effectiveness. This prestigious and intensive eight-week course focuses on the quantitative and analytical skills needed for a career in clinical research and is a shorter yet valuable alternative to a full degree program. Both options will be available to trainees in the appropriate tracks. Additional UW-based courses are available, and the selection will be individualized during training planning meetings.

Advanced Clinical Training in Immunocompromised Host ID (MD track only)

Although the main focus of the T32 is training in research, we believe that future medical leaders in immunocompromised ID must have superior clinical training that goes beyond the standard training obtained during the first clinical fellowship year. Therefore, we created the following opportunities to enhance clinical experience and skills. We believe that these limited clinical activities are critical and will be synergistic with the research goals and, ultimately, create both clinically and academically competent leaders. The clinical commitment will be carefully monitored during the regular program review process.

- Basic training part of ID fellowship: focus on inpatient immunocompromised ID.
- Participation in the outpatient clinics in HCT/cancer and SOT in year 2
- Participation in ID attending service as junior attending in year 3 with co-attending of a senior, experienced immunocompromised host physician (two 14-day blocks in the last year of training). This opportunity is aimed at solidifying the training in immunocompromised host ID medicine and continuing the trainee's career trajectory by functioning at the attending level (with primary responsibility and note signing) with concurrent co-attending by experienced program faculty. This provides a unique training experience and allows for increased salary supported by the clinical billing, thereby avoiding a career delay. This innovative model is facilitated by a title of Senior Fellow/Acting Instructor available in our system, which permits functioning in a hybrid fashion of a senior fellow and clinical attending (with billing privileges).
- Clinical transition meetings (bi-weekly): these meetings are case-based and open to all fellows and faculty with interest in the immunocompromised ID; they are also attended by pulmonologists.
- Clinical care conferences: a quarterly meeting that discusses ID management issues, reviews abstracts from national ID conferences, and reviews autopsy findings.
- Participation in infection control and stewardship meetings. We offer representative attendance in infection control meetings; many ID specialists will have to assume partial functions in these areas (even if they are not a dedicated leader in a particular hospital).

Career Development Opportunities

In addition to the above opportunities for developing skills in manuscript and grant writing, presenting their research, and broadening their scientific knowledge, trainees in our program are encouraged to take advantage of numerous career development resources at Fred Hutch and UW.

- The Fred Hutch Office of Scientific Career Development (OSCD) Director is available to have an informal career conversation with every new trainee.
- OSCD facilitates the Ivory Tower Quest Series (panels and talks on putting together application packets and interviewing for faculty positions), the Exploration Program for Industry Careers (EPIC, featuring half-day site visits to local biotech companies and networking opportunities), and the First Friday Series (seminars featuring scientific career options). They also provide examples of successful faculty applications.
- The Fred Hutch Student-Postdoc Advisory Committee (SPAC) Seminars and Workshops enhance the professional development of trainees so that they master the skills necessary for a successful career and learn

about the types of careers that are available to them in both academia (including grant writing) and non-academic fields.

- UW career development resources include Fellows' Day, with a speaker panel on different career paths. We actively encourage trainees in year 3 to apply for independent positions in a research career pathway.

Facilities and Resources

The collaboration between the members of the Seattle Cancer Care Alliance provides access to a variety of resources for endeavoring researchers. These resources include, but are not limited to, the following:

CLINICAL

Clinical space is located at various locations across Seattle. As part of the Cancer Consortium, the SCCA clinic resides in a seven-story, 159,000 square foot facility on the Fred Hutch campus. It houses outpatient clinics, multi-bed clinical trial units, radiation oncology, diagnostic imaging, clinical laboratory, infusion therapy, apheresis, minor procedures, physical therapy, pharmacy, patient support services, and faculty and administrative offices. Additionally, the SCCA inpatient unit at the University of Washington Medical Center (UWMC) has 50 beds on the 7th and 8th floors.

Other affiliated sites and hospitals include UWMC and Seattle Children's Hospital. This unique network of hospitals gives fellows the opportunity to train under world-renowned physicians with diverse patient populations and access to world-class resources. Clinical training takes place at these locations.

The Infectious Disease clinics for HCT/cancer patients will be held at the SCCA building while the SOT ID clinic is located at the UWMC.

COMPARATIVE MEDICINE

Fred Hutch, along with its Consortium partnership organizations such as the UW, provides a broad variety of animal housing, veterinary, and research support services. The facility is fully accredited by the Association for Assessment and Accreditation of Laboratory Animal Care (AAALAC) and complies with all United States Department of Agriculture (USDA), Public Health Service (PHS), Washington State and local area animal welfare regulations. Comprehensive animal husbandry services are provided for all vertebrate animals used in the Consortium's programs of research. All housing and use of vertebrate animals is done in Comparative Medicine's centralized facilities which occupy approximately 50,000 net square feet.

COMPUTER

Fred Hutch's IT infrastructure and services are provided by a centralized department (Fred Hutch IT). It is currently staffed by 120 IT professionals that support, maintain and design Fred Hutch's complex heterogeneous research and administrative computing environments across multiple data centers. The services that Fred Hutch IT provides are extensive and they include:

- IT Help Desk support 8am to 5pm and 24/7 emergency IT on-call support
- Desktop, laptop and mobile computing management and support
- Clinical informatics systems/application management and support
- High Performance Computing (HPC), Scientific Computing support, and Software development support
- Messaging services: e-mail and calendar
- Anti-spam and anti-malware services
- Collaboration services: SharePoint

- Data storage services: SAN & NAS and Data protection services: file and database backups, off-site
- Connectivity services: wired networking, wireless, VPN and high-speed Internet access
- Telephone and voicemail services
- Security: encryption, firewalls, intrusion prevention, forensics and consulting

Fred Hutch IT manages the institution's Storage Area Network (SAN) which consists of a 3PAR/NetApp consolidated storage system and an Isilon Storage cluster to provide high throughput data access for High Performance Computing. The total networked storage capacity is currently 1 PetaByte. Data protection is implemented by DataDomain appliances in conjunction with Commvault Simpana backup software and IBM Tivoli Storage Manager.

In order to accommodate the growing demand for computer resources and mitigate the power demands of physical systems, many of the server services are provided by virtual systems using the advanced VMWare VSphere technology. The virtual systems have the added protection of being recoverable through snapshots which are taken and stored on a daily basis. The vSphere environment is configured as self-service Enterprise cloud and currently hosts more than 800 virtual machines.

Fred Hutch IT supports both UNIX/IMAP (Zimbra) and Microsoft Exchange for e-mail services. Fax and photocopier machines are also available throughout Fred Hutch.

Fred Hutch IT also provides support for over 60 applications that are made available to the entire organization including an enterprise level SharePoint Collaboration platform.

The Information Security Office (ISO) is part of Fred Hutch IT and is staffed with 5 FTEs. The ISO maintains a highly available Intrusion prevention system and high-performance firewall.

OFFICE

Office space is provided by Fred Hutch to its divisions and programs. Faculty occupies offices, while fellows are provided work-space within close proximity to their mentors. There are 93 conference rooms of varying sizes on campus with video conferencing capabilities in most of the larger conference facilities. Other amenities to campus buildings include secure file rooms and an on-site copy center.

SHARED RESOURCES AT THE FRED HUTCH

The Shared Resources (<https://sharedresources.fredhutch.org/>) at the Fred Hutch consist of facilities and laboratories that are made available for use to all Fred Hutch investigators as well as our consortium institutions, external academic and biotechnology community. The facilities give investigators the opportunity to augment their research with resources that would not otherwise be convenient or cost effective in each individual laboratory. The Fred Hutch's centralized facilities have proven to improve the feasibility and efficiency of performing clinical trials and permit more rapid translation of laboratory studies into clinical applications. These Shared Resources include:

- Antibody Technology
- Arnold Library
- Biologics Production
- Collaborative Data Services
- Comparative Medicine
- Electron Microscopy
- Experimental Histopathology
- Flow Cytometry
- Genomics
- Glassware Services
- Immune Monitoring

- Nutrition Assessment
- NWBioTrust
- Prevention Center
- Proteomics
- Scientific Computing
- Scientific Imaging

The resources are available to trainees and serve the purpose of providing routine services for a variety of research activities, many of which are also focal points for technology dissemination and collaborative research. All resources are staffed by personnel with expertise specific to that facility.

Fred Hutch has two secured freezer facilities that occupy ~10,000 square feet on the campus. There is dedicated space for liquid nitrogen and scientific freezers for long-term specimen and sample storage. Since our last T32 grant submission, a second on-site secure facility was added to accommodate the specimen storage needs of Fred Hutch faculty. Both facilities and freezers are monitored 24 hours a day, 7 days a week by the Engineering Department.

Within Fred Hutch Shared Resources, the Research Cell Bank maintains the centralized transplant genomics repository of frozen blood cells and DNA derived from hematopoietic cell transplant patients, donors and family members dating back to the 1970s. The cell bank houses blood, cell and DNA material from more than 20,000 HCT recipients and donors.

Scientific Computing (recently moved to under Shared Resources)

The Scientific Computing group is staffed with 8 FTEs and provides the following services to Fred Hutch research groups and shared resources:

- High Performance Computing (access to the Gizmo HPC cluster including large memory machines, scratch spaces and web gateways for web job submission)
- High Performance Cloud Computing support for Amazon Web Services
- General Linux/Unix support (Linux Desktop Support, managing applications on departmental Linux servers)
- Software Development Support (Github source code management, code evaluation for R, Python, shell scripting support, software packaging, performance evaluation)
- HPC and Linux/Unix Training
- File and Data management assistance / Data archiving

Other Resources/Services

Within the IDS Program of VIDDD, two IRB-approved biospecimen repositories exist, the Infectious Disease Biorepository and Microbiome Biorepository. The Infectious Disease Repository is open for use by all Fred Hutch investigators and houses over 385,000 specimens. Research utilizing the repository has led to four funded NIH grants and ten funded projects through foundations or institutional funding. For the Microbiome Repository, access is available to over 31,800 samples for Fred Hutch investigators.

An additional resource available to mentees within the IDS Program is centralized data and statistical support. Within the last three years, IDS has hired a statistical research associate and data management analyst. The statistical research associate has over 15 years of experience working in the field of infectious disease research in the immunocompromised host. The statistical research associate provides guidance to trainees on how best to develop the parameters for collection and analyze their research data for abstracts, publications and grant submissions. The data management analyst works with the faculty and statisticians to collect and retrieve data from Amalga (a clinical research platform containing patient data from across our partners at the SCCA, UW and SCH), clean data for statistical analysis, and develop RedCap databases for a variety of clinical research projects. These resources are available for trainees based in the IDS Program.

Fred Hutch has a Clinical Research Support (CRS) Administrative office that supports the center and consortium partners' mission to ensure the conduct of efficient, compliant and high-quality clinical research. CRS oversees the

following resources to support on-going research: clinical trials website management, contracts and fiscal management, partner access, protocol review meeting coordination, quality management, research management data and training. In 2018 in conjunction with the CRS, Fred Hutch IT and our consortium partners at the UW and SCCA, a Clinical Trials Management System (CTMS) called OnCore was developed and rolled out to our organizations. This system allows our organizations the ability to manage clinical trial portfolios more effectively.

The Arnold Library provides high quality, responsive services, and resources in support of Fred Hutch's research, education and patient care programs. The library's physical space houses study carrels with wireless Internet access, patron computers and the Shared Resources Computer Lab. This centralized resource encompasses subscription management for more than 30,000 ebooks and over 37,000 online journals as well as a variety of databases and web services. Librarians curate Fred Hutch researchers' profiles, provide center-wide tracking of scholarly publishing, support Center authors with NIH Public Access Policy compliance, manage the Shared Resources website, provide training and support for citation management tools like EndNote, provide reports and consultation on publication metrics, host a course guides system to support faculty instructors, manage the Fred Hutch history archive and administer several institutional repositories.

Finally, the training program is serviced by a thrice-daily courier service to transport specimens and materials between clinics and laboratories through an affiliation with the Virology Division at the University of Washington. This service has been highly effective and beneficial over the past 2 decades in promoting interdisciplinary research.

Track Descriptions

Our program training has three different yet finely integrated tracks that represent not only the individual strengths of the training faculty but also areas of innovation and unmet scientific and medical need. Senior faculty mentors with outstanding credentials within the unique area have been selected to be leaders of each track.

1) CLINICAL RESEARCH, INFECTION PREVENTION AND STEWARDSHIP EPIDEMIOLOGY, PATHOGEN DYNAMICS AND CLINICAL TRIALS

Michael Boeckh and Ajit Limaye, Co-Track Leaders

This track will provide trainees with excellent opportunities to develop skills in a broad range of areas related to the epidemiology of infections in HCT and SOT patients as well as moderately immunosuppressed patients, e.g., after a new diagnosis of cancer or those with autoimmune or chronic diseases requiring immunosuppressive treatment. The transplant ID programs at the Fred Hutch and UW have multiple and diverse ongoing projects that focus on the spectrum, risk factors, biomarkers/diagnostics, and outcomes of bacterial, viral, and fungal pathogens in HCT and SOT recipients. Through collaborations with faculty with expertise in mathematical modeling and biostatistics, this track will also provide trainees within depth experience in the relationship between pathogen and clinical outcomes and host determinants of pathogen dynamics, an area with important implications for defining the pathogenesis of infections in immunosuppressed hosts and in the design of interventional studies. Studies will be facilitated by a state-of-the-art molecular diagnostic laboratory directed by Keith Jerome and an unparalleled sample biorepository. This track will also provide trainees with excellent opportunities to develop skills in all aspects of observational and interventional trials. Trainees will obtain experience in trial design, patient recruitment and retention, implementation, monitoring, regulatory aspects, funding, and data analysis. This track also provides trainees with opportunities to study the epidemiology of healthcare associated infections as well as potential interventions aimed at reducing the risk of such infections in the immunocompromised host. This training program is one of the few existing programs aimed at expanding knowledge in the nascent field of infection control in these vulnerable patient populations for decades. Potential projects for trainees may focus on targeted organisms (e.g., multidrug-resistant organisms, respiratory viruses, etc.), targeted conditions (e.g., central line associated bloodstream infections), targeted interventions (e.g., chlorhexidine gluconate bathing, environmental decontamination, etc.), or addressing antimicrobial stewardship in these high-risk patients. Training will be obtained through attendance at weekly clinical trial meetings for ongoing trials, coursework in

biostatistics and epidemiology, and attendance at scientific meetings. The breadth of faculty expertise and the long and distinguished past track record of successful clinical investigator trainees will ensure that future trainees are well prepared for independent careers as translational investigators. Trainees in this track are encouraged to pursue a Master in Epidemiology/Public Health degree.

2) IMMUNOLOGY/IMMUNOGENETICS

Geoffrey Hill, Track Leader

This track will conduct research of the specificity and function of human T cell responses to pathogens with the overall goal of understanding the biology of host-pathogen interactions. After initial pioneering human trials of adoptively transferred T cell clones to prevent cytomegalovirus (CMV) infection after allogeneic HCT, human trials of T cell therapy including the use of gene-modified T cells are now a strong research focus and area for training. These studies require the development of techniques for viral antigen discovery, and for isolation, expansion, characterization, engineering and reinfusion of T cells into patients. Additional studies are directed at defining intrinsic qualities of T cells that enable superior persistence and efficacy after adoptive transfer with specific emphasis on the identification of a novel memory T cell subset in humans that is distinct in phenotype, gene expression profile, response to homeostatic cytokines, and functional properties. The role of antibodies in control of viral disease (including CMV and respiratory viruses) is another area of research, energized by the work of Dr. Geoffrey Hill and an animal model for CMV now available in his lab. Another focus of this track is to study factors associated with vaccine responses in the immunocompromised host. Immunocompromised hosts are often excluded from standard vaccinations during the time of maximum need; however, recent studies using novel CMV and varicella zoster virus (VZV) vaccines specifically target immunocompromised patients. This track also offers research opportunities to define pathogen-specific and immune reconstitution dynamics in immunosuppressed populations and to characterize and optimize vaccine responses using state of the art computational methodologies. Another area covered in this track is the genetic basis of infectious diseases. A unique cohort of 5,000 HCT recipients/ donors have undergone genotyping facilitates genome wide association studies (GWAS) of infectious phenotypes as well as associated validation experiments. Gene expression studies characterizing host signatures associated with progressive infectious diseases in immunocompromised hosts are another area for prospective trainees. Senior faculty with top credentials, computational expertise, and state-of-the-art technologies in labs and shared resources (including strong genomics facilities) support these studies.

3) MICROBIOME AND PATHOGENESIS

David Fredricks, Track Leader

This research track provides trainees with the opportunity to study the role of individual microbial pathogens in transplant outcomes and infectious complications in the immunocompromised host (e.g., CMV, respiratory viruses, *Clostridium difficile*, *Enterococcus faecalis*, *Aspergillus fumigatus*, and others). For example, postdoctoral fellows can investigate how CMV and HSV subvert the human immune response to establish lifelong infection, and the factors leading to reactivation of viral infection in the immunocompromised host. To facilitate studies, stool, mouth and skin samples from prospective cohort studies are available to trainees (as well as samples from our general repository). In addition, this track will provide a rich training environment for studying human-associated microbial communities (the indigenous microbiota) and their genes (the microbiome), with a focus on how bacterial communities at particular epithelial surfaces impact risk of infection and outcomes, such as graft-versus-host disease after HCT. Fred Hutch and the UW have a deep and diverse community of investigators studying aspects of the human microbiome and pathogenesis, providing many opportunities for rigorous laboratory-based investigation and career development. . In 2017, Dr. Fredricks launched the Microbiome Research Initiative, which serves as an incubator for new scientific opportunities by galvanizing investigators who are pursuing microbiome studies, capitalizing on recent advances in the field and catalyzing nascent research on the microbiome that impacts cancer and infectious diseases

PROGRAM DIRECTOR

Michael Boeckh, MD, PhD, Head of the Infectious Disease Sciences Program, will serve as Program Director for the training program contributing 10% effort. This effort will be concurrent with his Program Head responsibilities and is compensated through funds provided by the Vaccine and Infectious Disease Division (VIDD) of Fred Hutchinson Cancer Research Center. As Program Director, Dr. Boeckh's responsibilities are to administer and oversee the training program, interact with NIAID and the different committees, oversee the integration of the training grant program into program activities to ensure the success of each trainee, and manage all other aspects of the training program.

ASSOCIATE DIRECTORS

Joshua Schiffer, MD, MSc, Associate Professor at Fred Hutch/UW and Catherine Liu, MD, Professor at Fred Hutch and Associate Professor at UW, will serve as Associate Directors. Dr. Liu also serves as Director of the Antimicrobial Stewardship and Outpatient Parenteral Antimicrobial Therapy Programs at the SCCA. As Associate Directors of the training program, Drs. Schiffer and Liu's responsibilities are participating in the selection process for trainees, creating mentorship committees; participating in the trainee evaluation process; participating in EAC and IAC meetings; curriculum planning and execution, and preparation of annual training grant progress reports.

EXTERNAL ADVISORY COMMITTEE

The External Advisory Committee (EAC) comprises four distinguished individuals (Kieren Marr, Nina Singh, David Snyderman, John Zaia) outside of our consortium organizations with strong credentials in both laboratory sciences and clinical research, expertise in obtaining NIH funding, and training the next generation of scientists.

INTERNAL ADVISORY COMMITTEE

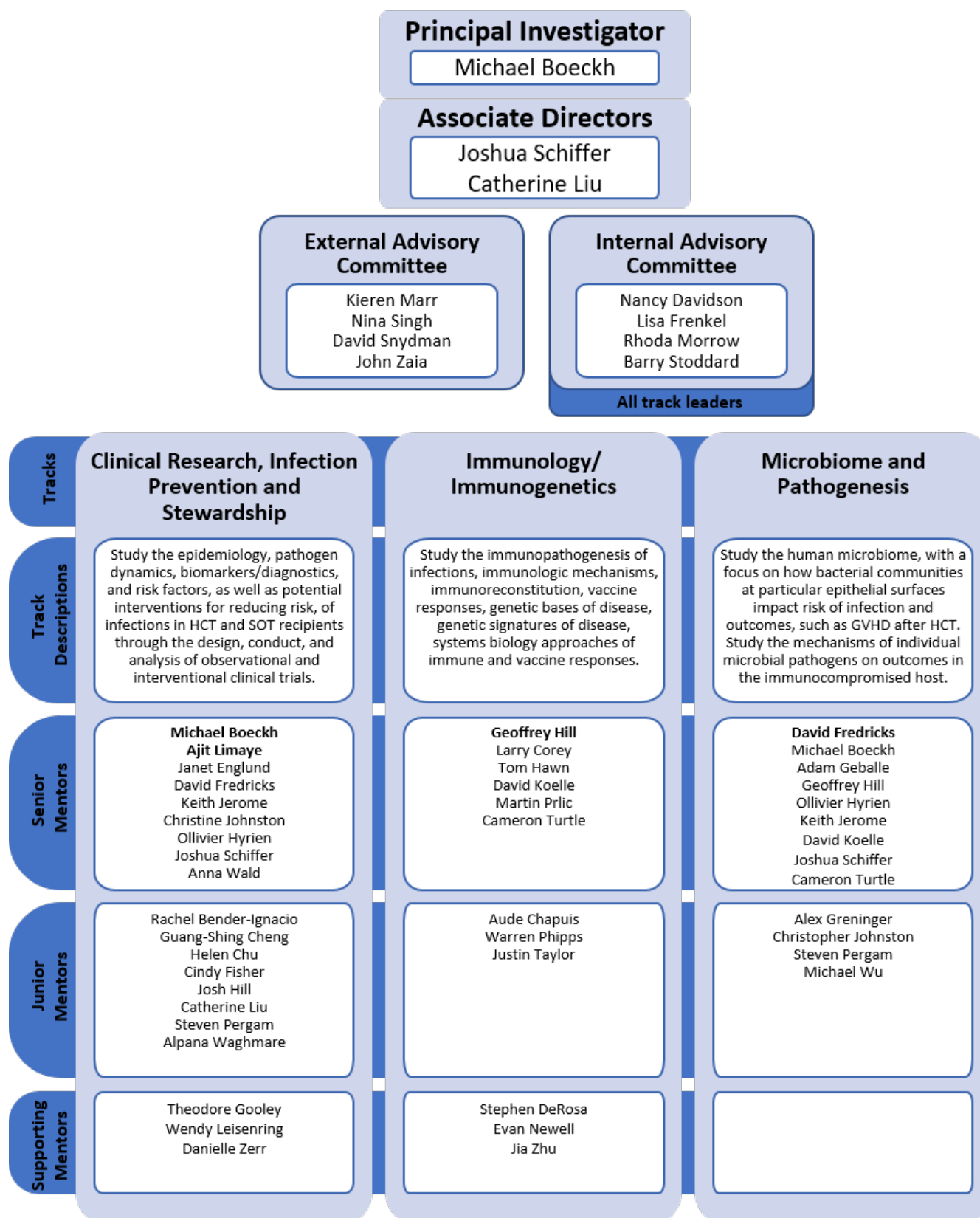
The Internal Advisory Committee (IAC) comprises all track leaders as well as distinguished individuals from inside of Fred Hutch and our consortium organizations with strong credentials in training, laboratory sciences and clinical research expertise as well as familiarity with the mission of our training program. The IAC committee members are Nancy Davidson, Lisa Frenkel, Rhoda Morrow, Barry Stoddard, David Fredricks, Geoffrey Hill, Ajit Limaye, and Michael Boeckh.

SENIOR, JUNIOR AND SUPPORTING MENTORS

Training faculty with an especially strong expertise and track record in the fields of virology, molecular immunology, immunogenetics, microbial pathogenesis, epidemiology, clinical trials conduct and biostatistics, will serve as mentors. Senior mentors were selected based upon the excellence of their research, ability to secure competitive extramural funding, and mentoring records. Junior mentors have less mentoring experience, and mentorship skills will be developed by pairing them with a senior and a supportive mentor. All have a unique set of skills and achievements for which they were selected to serve on the training faculty. We anticipate that some of the junior mentors will move into the senior mentor rank during the next five-year grant period.

This co-mentoring approach has been a highly successful concept in our experience. It will not only increase access to mentors for the trainees but also provide leadership and guidance as the younger faculty member develops mentoring skills. Overall, this approach will enrich the training experience of co-mentored trainees.

Training Program Organization



NOTE: **Bold** indicates Track Leaders

Rachel Bender Ignacio, M.D., M.P.H.

Assistant Professor, Vaccine and Infectious Disease Division, Fred Hutch

Medical Director, COVID-19 Clinical Research Center, Fred Hutch

Assistant Professor, Allergy and Infectious Diseases, University of Washington

Adjunct Assistant Professor, Department of Epidemiology, University of Washington

Dr. Bender Ignacio is a physician-scientist who specializes in the treatment and prevention of infectious diseases, focusing on viral co-infections in immunocompromised persons, including infection-related cancers. Dr. Bender Ignacio also studies the development of cancers in people living with HIV and develops protocols for clinical care of people with HIV-related malignancies. Her translational research on the immune system includes research on inflammation, immune-cell and antibody responses to viral infections, and susceptibility to HIV, as well as studies on the establishment of latency in early HIV infection. She has led efforts at the Hutch to evaluate the human anti-viral repertoire through transfer of the VirScan technology to the institution, and its use in studies in immunocompromised hosts. She also is engaged in the design and operation of studies on ways to treat COVID-19 in its early stages. She leads the Hutch's COVID-19 Clinical Research Center and the UW AIDS Clinical Trials Unit.

Bender Ignacio RA, Lee JY, Rudek MA, Dittmer DP, Ambinder RF, Krown SE. A phase 1b/pharmacokinetic trial of PTC-299, a novel post-transcriptional VEGF inhibitor, for AIDS-related Kaposi's sarcoma: AIDS Malignancy Consortium trial 059. *J Acquir Immune Defic Syndr*. 2016;72(1):52-7. doi: 10.1097/QAI.0000000000000918 PMCID: PMC4838493

Bender Ignacio RA*, Goldman JD*, Magaret AS, Selke S, Huang ML, Gantt S, Johnston C, Phipps WT, Schiffer JT, Zuckerman RA, McClelland RS,

Celum C, Corey L, Wald A, Casper C. Patterns of human herpesvirus-8 oral shedding among diverse cohorts of human herpesvirus-8 seropositive persons. *Infect Agent Cancer*. 2016;11:7. doi: 10.1186/s13027-016-0052-2. PMCID: PMC4748452 (*contributed equally)

Bender Ignacio R, Ghadrshenas M, Low D, Orem J, Casper C, Phipps W. HIV status and associated clinical characteristics among adult patients with cancer at the Uganda Cancer Institute. *J Glob Oncol*. 2018;4:1-10. doi: 10.1200/JGO.17.00112. PMCID: PMC6181185

Bender Ignacio RA, Dasgupta S, Stevens-Ayers T, Kula T, Hill JA, Lee SJ, Mielcarek M, Duerr A, Elledge SJ, Boeckh M. Comprehensive viromewide antibody responses by systematic epitope scanning after hematopoietic cell transplantation. *Blood*. 2019;134(6):503-514. doi: 10.1182/blood.2019897405. PMCID: PMC6688428

Hill JA, Krantz EM, Hay KA, Dasgupta S, Stevens-Ayers T, **Bender Ignacio RA**, Bar M, Maalouf J, Cherian S, Chen X, Pepper G, Riddell SR, Maloney DG, Boeckh MJ, Turtle CJ. Durable preservation of antiviral antibodies after CD19-directed chimeric antigen receptor T-cell immunotherapy. *Blood Adv*. 2019;3(22):3590-3601. doi: 10.1182/bloodadvances.2019000717 PMCID: PMC6880890.

Michael Boeckh, MD, PhD

Professor, Vaccine and Infectious Disease and Clinical Research Divisions, Fred Hutch

Professor of Allergy and Infectious Diseases and Medicine, University of Washington

Head, Infectious Disease Sciences Program, Fred Hutch

Dr. Boeckh is a Professor of the VIDD at the Fred Hutch, and a Professor of Medicine, Division of Allergy and Infectious Diseases, at the UW. He has been serving as the Program Head since 2012, and has been serving as a senior training program

faculty for many years. Dr. Boeckh started mentoring numerous fellows and students in clinical research projects in 1994 and worked with a large number of people over the years. He has long-standing experience in patient-oriented research with clinical research projects in transplant recipients, including studies that examine the impact and epidemiology of and risk factors for CMV, respiratory viruses and fungal infections in transplantation and management strategies. He has been conducting large prospective observational and interventional studies supported by federal and non-federal funding sources. Dr. Boeckh's recent projects focus on complications of HCT relating to respiratory viral infections and the genetic predisposition to infectious complications. To perform this work, he has built an infrastructure to receive and process samples from patients undergoing HCT and used this system to build a biorepository. Dr. Boeckh is associated as faculty member with several T32 training programs in Seattle and is actively involved in fostering and evaluating the career development of his own trainees as well as many others in the field. He is also part of the External Advisory Committee of the Interdisciplinary Transplant Infectious Disease T32 grant at Duke University (T32 AI100851). Dr. Boeckh has authored over 196 peer-reviewed research publications, 5 editorials, 22 book chapters and reviews, and 59 other publications. He trained 10 postdoctoral ID fellows and 2 predoctoral students, as well as 12 international postdoctoral scientists.

Green ML, Leisenring W, Xie H, Mast TC, Cui Y, Sandmaier BM, Sorrow ML, Goyal S, Özkök S, Yi J, Sahoo F, Kimball LE, Jerome KR, Marks MA, **Boeckh M**. Cytomegalovirus viral load and mortality after hematopoietic cell transplantation in the era of pre-emptive therapy: a retrospective cohort study. *Lancet Haematol*. 2016;3(3):e119-27. doi: 10.1016/S2352-3026(15)00289-6 PMID: PMC4914379

Green ML, Leisenring WM, Xie H, Walter RB, Mielcarek M, Sandmaier BM, Riddell SR, **Boeckh M**. CMV reactivation after allogeneic HCT and relapse risk: evidence for early protection in acute myeloid leukemia. *Blood*. 2013;122(7):1316-24.

doi: 10.1182/blood-2013-02-487074 PMID: PMC3744995

Marty FM, Winston DJ, Rowley SD, Vance E, Papanicolaou GA, Mullane KM, Brundage TM, Robertson AT, Godkin S, Momméja-Marín H, **Boeckh M**, CMX001-201 Clinical Study Group. CMX001 to prevent cytomegalovirus disease in hematopoietic-cell transplantation. *N Engl J Med*. 2013;369(13):1227-36. doi: 10.1056/NEJMoa1303688

Seo S, Xie H, Campbell AP, Kuypers JM, Leisenring WM, Englund JA, **Boeckh M**. Parainfluenza virus lower respiratory tract disease after hematopoietic cell transplantation: viral detection in the lung predicts outcome. *Clin Infect Dis*. 2014;58(10):1357-68. doi: 10.1093/cid/ciu134 PMID: PMC4001290

Aude Chapuis, MD

Assistant Professor, Clinical Research Division, Fred Hutch

Assistant Professor University of Washington

Dr Aude Chapuis is head of a laboratory focusing on the development a translational pipeline designed to improve T cell receptor (TCR) gene therapy. This spans target identification, generation of high-affinity TCRs, cell process methodologies to translate these constructs into effective products for patients, clinical trial development and execution, and sophisticated high dimensional immune-monitoring to maximize the information that can be derived from each treated patient. A non-exhaustive list of diseases being targeted by the lab include virally-driven tumors (targeting Merkel-cell polyoma virus antigens in Merkel cell carcinoma), solid tumors (targeting the cancer-testis antigen MAGE-A1 in non-small cell lung cancer, triple negative breast cancer, and bladder cancers; and targeting Wilms' tumor antigen 1 [WT1] in thoracic and gynecological cancers), and leukemias (targeting two epitopes of WT1 in acute myeloid leukemia). The lab is embedded within a highly collaborative network to implement these translational strategies including investigators in basic science, oncology disease-specific clinicians, and cancer immunology labs. Additionally, Dr Chapuis is an oncologist and

attends in the Bone marrow transplant and Immunotherapy services.

Chapuis AG, Egan DN, Schmitt TM, McAfee MS, Paulson KG, Voillet V, Gorttardo R, Ragnarsson GB, Bleakley M, Yeung CC, Mulhauser P, Nguyen HN, Kropp LA, Castelli L, Wagener F, Hunter D, Lindberg M, Cohen K, Seese A, McElrath J, Duerkopp N, Gooley TA, Greenberg PD. T cell receptor gene therapy targeting WT1 prevents acute myeloid leukemia relapse post-transplant. *Nat Med.* 2019;25(7):1064-1072. PMID: PMC6982533.

Chapuis AG, Roberts IM, Thompson JA, Margolin KA, Bhatia S, Lee SM, Sloan HL, Lai IP, Farrar EA, Wagener F, Shibuya KC, Cao J, Wolchok JD, Greenberg PD, Yee C. T-cell therapy using interleukin-21-primed cytotoxic T-cell lymphocytes combined with cytotoxic T-Cell lymphocyte antigen-4 blockade results in long-term cell persistence and durable tumor regression. *J Clin Oncol.* 2016;34(31):3787-3795. doi: 10.1200/JCO.2015.65.5142. PMID: PMC5477923.

Chapuis AG, Lee SM, Thompson JA, Roberts IM, Margolin KA, Bhatia S, Sloan HL, Lai I, Wagener F, Shibuya K, Cao J, Wolchok JD, Greenberg PD, Yee C. Combined IL-21-primed polyclonal CTL plus CTLA4 blockade controls refractory metastatic melanoma in a patient. *J Exp Med.* 2016;213(7):1133-9. doi: 10.1084/jem.20152021. PMID: PMC4925025.

Paulson KG, Voillet V, McAfee MS, Hunter DS, Wagener FD, Perdicchio M, Valente WJ, Koelle SJ, Church CD, Vandeven N, Thomas H, Colunga AG, Iyer JG, Yee C, Kulikauskas R, Koelle DM, Pierce RH, Bielas JH, Greenberg PD, Bhatia S, Gottardo R, Nghiem P, **Chapuis AG**. Acquired cancer resistance to combination immunotherapy from transcriptional loss of class I HLA. *Nat Commun.* 2018;9(1):3868. doi: 10.1038/s41467-018-06300-3. PMID: PMC6155241.

Chapuis AG, Desmarais C, Emerson R, Schmitt TM, Shibuya K, Lai I, Wagener F, Chou J, Roberts IM, Coffey DG, Warren E, Robbins H, Greenberg PD, Yee C. Tracking the Fate and Origin of

Clinically Relevant Adoptively Transferred CD8+ T Cells In Vivo. *Sci Immunol.* 2017;2(8):eaal2568. doi: 10.1126/sciimmunol.aal2568. PMID: PMC5371351.

Guang-Shing Cheng, MD

Associate Professor, Clinical Research Division, Fred Hutch

Associate Professor of Medicine, Division Pulmonary, Critical Care and Sleep Medicine, University of Washington

Affiliate Investigator, Vaccine and Infectious Diseases Division, Fred Hutch

Dr. Cheng is an Associate Professor at Fred Hutch and Associate Professor of Medicine at UW, as well as Affiliate Investigator in VIDD. As a trained pulmonary/critical care specialist, she has a research interest on the early detection of bronchiolitis obliterans syndrome, highly morbid and fatal complication of allogeneic hematopoietic cell transplantation, and the role that respiratory infections play in the BOS pathogenesis. The aim of her current R01-funded study is to assess the impact of community-acquired respiratory viruses on the longitudinal lung function trajectory and development of BOS. This protocol also involves translational work on viral exposure and biomarkers in collaboration with the Boeckh lab and others.

Turner J, He Q, Baker K, Chung L, Lazarevic-Fogelquist A, Bethune D, Hubbard J, Guerriero M, Sheshadri A, Syrjala KL, Martin PJ, Boeckh M, Lee SJ, Gooley T, Flowers ME, **Cheng GS**. Home spirometry telemonitoring for early detection of bronchiolitis obliterans syndrome in patients with chronic graft-versus-host disease. *Transplant Cell Ther.* 2021;27(7):616.e1-616.e6. doi: 10.1016/j.jtct.2021.03.024. PMID: PMC8423348.

Jamani K, He Q, Liu Y, Davis C, Hubbard J, Schoch G, Lee SJ, Gooley T, Flowers MED, **Cheng GS**. Early post-transplant spirometry is associated with the development of bronchiolitis obliterans syndrome after allogeneic hematopoietic cell transplant. *Biol Blood Marrow Transplant.* Epub 2019/12/11. 2020 May;26(5):943-948. doi: 10.1016/j.bbmt.2019.12.002. PMID: PMC7255698.

Cheng GS, Storer B, Chien JW, Jagasia M, Hubbard JJ, Burns L, Ho VT, Pidala J, Palmer J, Johnston L, Mayer S, Crothers K, Pusic I, Lee SJ, Williams KM. Lung function trajectory in bronchiolitis obliterans syndrome after allogeneic hematopoietic cell transplant. *Ann Am Thorac Soc*. 2016;13(11):1932-1939. doi: 10.1513/AnnalsATS.201604-262OC. PMID: PMC5122479.

Cheng GS, Campbell AP, Xie H, Stednick Z, Callais C, Leisenring WM, Englund JA, Chien JW, Boeckh M. Correlation and agreement of handheld spirometry with laboratory spirometry in allogeneic hematopoietic cell transplant recipients. *Biol Blood Marrow Transplant*. 2016;22(5):925-31. doi: 10.1016/j.bbmt.2015.12.023. PMID: PMC4826299.

Boonyaratanakornkit J, Vivek M, Xie H, Pergam SA, **Cheng GS**, Mielcarek M, Hill JA, Jerome KR, Limaye AP, Leisenring W, Boeckh MJ, Waghmare A. Predictive value of respiratory viral detection in the upper respiratory tract for infection of the lower respiratory tract with hematopoietic stem cell transplantation. *J Infect Dis*. 2020;221(3):379-388. doi: 10.1093/infdis/jiz470. PMID: PMC107470.

Helen Chu, M.D., M.P.H.

Associate Professor of Allergy and Infectious Diseases and Medicine, University of Washington

Adjunct Associate Professor, Department of Global Health and Department of Epidemiology, University of Washington

Lawrence Corey, MD

Past President and Director, Fred Hutch

Professor, Vaccine and Infectious Disease, Public Health Sciences, and Clinical Research Divisions, Fred Hutch

Professor of Medicine and Laboratory Medicine & Pathology; Lawrence Corey Endowed Chair in Medical Virology, University of Washington

Dr. Corey is a professor of VIDD at the Fred Hutch, professor in Laboratory Medicine & Pathology and

Medicine at the UW and Past President and Director of Fred Hutch. In 1999, he reorganized the NIH HIV vaccine program to integrate and expedite the development of HIV vaccines globally, developing the Fred Hutch -based HIV Vaccine Trials Network (HVTN), for which he has been Co-PI and PI since its establishment. He is an esteemed academic investigator with continuous NIH funding since 1978. Over the past 35 years, he has mentored and trained over 60 postdoctoral fellows, a majority of whom now hold faculty positions in academia and industry. His main areas of expertise have been in human virology; particularly HIV infections, herpesvirus complications in HCT, and infectious disease related cancers. His major area of laboratory expertise is in mucosal immunology of chronic viral infections. The Corey lab focuses on the pathogenesis of chronic viral infections and host immune responses. This includes herpes simplex virus type 2 (HSV-2), HIV, and most recently SARS-CoV-2. The lab uses HSV as a model to study the tissue based immune system of the genital tract. Their studies indicate a diverse and unique set of tissue resident cells populate the genital tract and their work is devoted to identifying and understanding the role of these cells in disease pathogenesis. The ultimate goal for these projects is to develop immunotherapeutic methods to control subclinical HSV-2 reactivation and reduce the transmission to sexual partners. Their lab has also been interested in using genetically modified T cells as a form of adoptive therapy for viral infections. At the moment, this work is in the HIV system using the NHP model. CAR T cells and genetically introducing innate immune functions into T cells are the main approaches. The goal here is to use adoptive transfer of genetically engineered T cells to traffic to and be effectors in lymphoid follicles with a goal to eradicate HIV infections.

Peng T, Phasouk K, Sodroski CN, Sun S, Hwangbo Y, Layton ED, Jin L, Klock A, Diem K, Magaret AS, Jing L, Laing K, Li A, Huang ML, Mertens M, Johnston C, Jerome KR, Koelle DM, Wald A, Knipe DM, **Corey L**, Zhu J. Tissue-resident-memory CD8+ T cells bridge innate immune responses in neighboring epithelial cells to control human genital herpes. *Front Immunol*. 2021;12:735643. doi:

10.3389/fimmu.2021.735643.
PMC8450389

PMCID:

Peng T, Phasouk K, Bossard E, Klock A, Jin L, Laing KJ, Johnston C, Williams NA, Czartoski JL, Varon D, Long AN, Bielas JH, Snyder TM, Robins H, Koelle DM, McElrath MJ, Wald A, **Corey L**, Zhu J. Distinct populations of antigen-specific tissue-resident CD8⁺ T cells in human cervix mucosa. *JCI Insight*. 2021 Aug 9;6(15):e149950. doi: 10.1172/jci.insight.149950. PMCID: PMC8410090

Haeseleer F, Fukazawa Y, Park H, Varco-Merth B, Rust BJ, Smedley JV, Eichholz K, Peterson CW, Mason R, Kiem HP, Roederer M, Picker LJ, Okoye AA, **Corey L**. Immune inactivation of anti-simian immunodeficiency virus chimeric antigen receptor T cells in rhesus macaques. *Mol Ther Methods Clin Dev*. 2021 Jun 24;22:304-319. doi: 10.1016/j.omtm.2021.06.008. PMCID: PMC8403686

Ford ES, Sholukh AM, Boytz R, Carmack SS, Klock A, Phasouk K, Shao D, Rossenkhon R, Edlefsen PT, Peng T, Johnston C, Wald A, Zhu J, **Corey L**. B cells, antibody-secreting cells, and virus-specific antibodies respond to herpes simplex virus 2 reactivation in skin. *J Clin Invest*. 2021 May 3;131(9):e142088. doi: 10.1172/JCI142088. PMCID: PMC8087200

Peng T, Chanthaphavong RS, Sun S, Trigilio JA, Phasouk K, Jin L, Layton ED, Li AZ, Correnti CE, De van der Schueren W, Vazquez J, O'Day DR, Glass IA, Knipe DM, Wald A, **Corey L**, Zhu J. Keratinocytes produce IL-17c to protect peripheral nervous systems during human HSV-2 reactivation. *J Exp Med*. 2017;214(8):2315-2329. doi: 10.1084/jem.20160581. PMCID: PMC5551564

Stephen De Rosa, MD

Research Professor of Laboratory Medicine and Pathology, University of Washington
External Joint Associate Professor, Vaccine and Infectious Disease Division, Fred Hutch

Dr. De Rosa is a Research Professor at UW and an External Joint Associate Professor at VIDD/Fred Hutch. He has been the Director of the Flow

Cytometry Laboratory within the HIV Vaccine Trials Network (HVTN) Laboratory Program for over ten years. For the past two years, he has been devoting effort to evaluating SARS-CoV-2-specific T cell responses to vaccination and infection through the COVID-19 Prevention Network (CoVPN). Thus, he has been providing expertise in multiparameter flow cytometry assays to optimize the development, performance and analysis of flow cytometric assays that enumerate and characterize cellular responses in infectious disease pathogenesis and vaccine studies. He has been trained in the Herzenberg laboratory at Stanford University and at the Vaccine Research Center at the NIH before he came to Seattle. He has trained and directly mentored numerous pre- and post-doctoral researchers in flow cytometry and he has served as a resource for our faculty and trainees that utilize flow cytometry in their research.

Lin, L., Finak, G., Ushey, K., Seshadri, C., Hawn, T. R., Frahm, N., Scriba, T. J., Mahomed, H., Hanekom, W., Bart, P. A., Pantaleo, G., Tomaras, G. D., Rerks-Ngarm, S., Kaewkungwal, J., Nitayaphan, S., Pitisuttithum, P., Michael, N. L., Kim, J. H., Robb, M. L., O'Connell, R. J., Karasavvas, N., Gilbert, P., **De Rosa, S. C.**, McElrath, M. J., and Gottardo, R. (2015). COMPASS identifies T-cell subsets correlated with clinical outcomes. *Nat Biotechnol*. 2015;33(6):610-616. doi: 10.1038/nbt.3187. PMCID: PMC4569006.

Hertoghs, N., Schwedhelm, K. V., Stuart, K. D., McElrath, M. J., and **De Rosa, S. C.** (2020). OMIP-064: A 27-color flow cytometry panel to detect and characterize human NK cells and other innate lymphoid cell subsets, MAIT cells, and gammadelta T cells. *Cytometry A*. 2020;97:1019-1023. doi: 10.1002/cyto.a.24031. PMCID: PMC8485754.

De Rosa SC, Edupuganti S, Huang Y, Han X, Elizaga M, Swann E, Polakowski L, Kalams SA, Keefer MC, Maenza J, Lu Y, Wise MC, Yan J, Morrow MP, Khan AS, Boyer JD, Humeau L, White S, Pensiero M, Sardesai NY, Bagarazzi ML, Weiner DB, Ferrari G, Tomaras GD, Montefiori DC, Corey L, McElrath MJ; HIV Vaccine Trials Network (HVTN) 098 Study Team. Robust antibody and cellular responses induced by DNA-only vaccination for HIV. *JCI Insight*. 2020 Jul

9;5(13):e137079. doi: 10.1172/jci.insight.137079. PMID: PMC7406303.

Zamora D, Duke ER, Xie H, Edmison BC, Akoto B, Kiener R, Stevens-Ayers T, Wagner R, Mielcarek M, Leisenring WM, Jerome KR, Schiffer JT, Finak G, **De Rosa SC**, Boeckh M. Cytomegalovirus-specific T-cell reconstitution following letermovir prophylaxis after hematopoietic cell transplantation. *Blood*. 2021 Jul 8;138(1):34-43. doi: 10.1182/blood.2020009396. PMID: PMC8493975.

Janet Englund, MD

Professor of Pediatric Infectious Diseases, University of Washington

Director, Pediatric Transplant ID, Seattle Children's Hospital

Affiliate Investigator, Vaccine and Infectious Disease and Clinical Research Divisions, Fred Hutch

Dr. Englund is a Professor of Pediatric Infectious Diseases. Her research interest is the impact of respiratory viruses, with particular emphasis on viral dynamics in children and adults with underlying immunosuppressive conditions. She has a strong training record as shown by five post-doctoral fellows who have received K-23 or similar awards. She has worked collaboratively in clinical trials sponsored by NIH/NIAID, CDC, and industry to assess new and old vaccines and improve viral diagnosis in infants, immunocompromised hosts of all ages, Native Americans, children in developing countries, and pregnant women. In the immunocompromised population, she has conducted productive studies of the epidemiology, prevention and treatment of respiratory viral disease due to RSV, influenza virus, rhinovirus (RhV), and human metapneumovirus, as well as respiratory viral diagnosis and long-term outcomes in immunocompromised patients of all ages. Currently, she is working with trainees to establish the importance of viral load in respiratory tract symptoms in children, and collaborating to study new vaccines and antiviral therapies against multiple respiratory viruses including SARS-CoV-2.

Waghmare A, **Englund JA**, Boeckh M. How I treat respiratory viral infections in the setting of intensive

chemotherapy or hematopoietic cell transplantation. *Blood*. 2016;127(22):2682-92. doi: 10.1182/blood-2016-01-634873 PMID: PMC4891952

Chu HY, Chin J, Pollard J, Zerr DM, **Englund JA**. Clinical outcomes in outpatient respiratory syncytial virus infection in immunocompromised children. *Influenza Other Respir Viruses*. 2016;10(3):205-10. doi: 10.1111/irv.12375 PMID: PMC4814860

Chu HY, **Englund JA**, Starita LM, Famulare M, Brandstetter E, Nickerson DA, Rieder MJ, Adler A, Lacombe K, Kim AE, Graham C, Logue J, Wolf CR, Heimonen J, McCulloch DJ, Han PD, Sibley TR, Lee J, Ilcisin M, Fay K, Burstein R, Martin B, Lockwood CM, Thompson M, Lutz B, Jackson M, Hughes JP, Boeckh M, Shendure J, Bedford T. Early detection of Covid-19 through a citywide pandemic surveillance platform. *New Engl J Med*. 2020;383(2):185-187. doi: 10.1056/NEJMc2008646. PMID: PMC7206929

Dingens AS, Crawford KH, Adler A, Steele SL, Lacombe K, Eguia R, Amanat F, Walls AC, Wolf CR, Murphy M, Pettie D, Carter L, Qin X, King NP, Veesler D, Krammer F, Chu HY, **Englund JA**, Bloom JD. Serological identification of SARS-CoV-2 infections among children visiting a hospital during the initial Seattle outbreak. *Nat Commun*. 2020;11(1):4378. doi: 10.1038/s41467-020-18178-1. PMID: PMC7463158

Kachikis A, **Englund JA**, Singleton M, Covelli I, Drake AL, Eckert LO. Short-term reactions among pregnant and lactating individuals in the first wave of the COVID-19 vaccine rollout. *JAMA Netw Open*. 2021 Aug 2;4(8):e2121310. doi: 10.1001/jamanetworkopen.2021.21310. PMID: PMC8371565

Cynthia Fisher, MD, MPH

Associate Professor of Allergy and Infectious Diseases and Medicine, University of Washington

Adjunct Associate Professor of Microbiology, University of Washington

Affiliate Investigator, Vaccine and Infectious Disease Division, Fred Hutch

Dr. Fisher is an Associate Professor of Infectious Diseases and Adjunct Associate Professor of Microbiology at UW, and an Affiliate Investigator at the Fred Hutch. Her research focuses primarily on the pathophysiology, diagnostics, and treatment of infections targeting immunocompromised hosts. Her specific interests include the role of respiratory virus infections in lung graft failure following lung transplantation, and the prevention, risk factors, and treatment of cytomegalovirus and invasive fungal infections in solid organ and stem cell transplant recipients. In addition, she is currently the PI of a multi-center NIH-funded study looking at the efficacy of an investigational CMV vaccine and a site investigator examining the immunologic response to COVID vaccination in immunocompromised hosts.

Fisher C.E., Stevens A.M., Boeckh M, Leisenring W, Pergam S.A., Hohl T.M. The serum galactomannan index predicts mortality in hematopoietic stem cell transplant recipients with invasive aspergillosis. *Clin Infect Dis*. 2013;57(7):1001-4. doi: 10.1093/cid/cit393. PMID: PMC3765008.

Fisher CE, Preiksaitis CM, Lease ED, Edelman J, Kirby K, Leisenring W, Raghu G, Boeckh M, and Limaye AP. Symptomatic respiratory virus infection and chronic lung allograft dysfunction. *Clin Infect Dis*. 2016;62(3): 313-9. doi: 10.1093/cid/civ871. PMID: PMC4706632.

Fisher CE, Hohl TM, Fan W, Storer BE, Levine DM, Zhao LP, Martin PJ, Warren EH, Boeckh M, Hansen JA. Validation of single nucleotide polymorphisms in invasive aspergillosis following hematopoietic cell transplantation. *Blood*. 2017;129(19):2693-2701. doi: 10.1182/blood-2016-10-743294. PMID: PMC5428460.

Kates OS, Haydel BM, Florman SS, Rana MM, Chaudhry ZS, Ramesh MS, Safa K, Kotton CN, Blumberg EA, Besharatian BD, Tanna SD, Ison MG, Malinis M, Azar MM, Rakita RM, Morilla JA, Majeed A, Sait AS, Spaggiari M, Hemmige V, Mehta SA, Neumann H, Badami A, Goldman JD, Lala A, Hemmersbach-Miller M, McCort ME, Bajrovic V, Ortiz-Bautista C, Friedman-Moraco R, Sehgal S, Lease ED, **Fisher CE***, Limaye AP*; UW COVID-19 SOT Study Team. Coronavirus disease 2019 in solid organ transplant: A multicenter cohort

study. *Clin Infect Dis*. 2021 Dec 6;73(11):e4090-e4099. doi: 10.1093/cid/ciaa1097. PMID: PMC7454362. (*co-senior authors)

David Fredricks, MD

Professor of Allergy and Infectious Diseases and Medicine, University of Washington

Professor, Vaccine and Infectious Disease and Clinical Research Divisions, Fred Hutchinson Cancer Research Center

Adjunct Professor of Microbiology, University of Washington

Dr. Fredricks is an infectious disease physician, microbiologist, and molecular biologist with more than 27 years of research experience. He has led a research team at the Fred Hutchinson Cancer Research Center and the University of Washington for the last 20 years that has focused on the study of human microbial communities using both cultivation-independent molecular methods (such as PCR and FISH), and *in vitro* cultivation approaches. The lab's goal is to advance our understanding of how the indigenous microbiota impacts human health, and to use this knowledge to develop new diagnostic and therapeutic tools. The Fredricks lab has also used novel cultivation approaches for laboratory propagation of fastidious human-associated bacteria. They have now extended these tools to study the microbiota in patients undergoing hematopoietic cell transplantation. They have also developed molecular diagnostic tests for the detection and identification of fungal pathogens in the immunocompromised host, and Dr. Fredricks has participated in multicenter studies evaluating diagnostics and treatments for fungal infections. Dr. Fredricks has mentored over 70 undergraduate students, graduate students, postdoctoral fellows, and junior faculty.

Khot PD, Ko DL, Hackman RC, **Fredricks DN**. Development and optimization of quantitative PCR for the diagnosis of invasive aspergillosis using bronchoalveolar lavage fluid. *BioMed Central Infect Dis*. 2008;8:73. doi: 10.1186/1471-2334-8-73 PMID: PMC2440748

Guthrie KA, Yong M, Frieze D, Corey L, **Fredricks DN**. The impact of a change in antibacterial prophylaxis from ceftazidime to levofloxacin in allogeneic hematopoietic cell transplantation. *Bone Marrow Transplant*. 2010;45(4):675-81. doi: 10.1038/bmt.2009.216 PMID: PMC2911962

Marty FM, Ostrosky-Zeichner L, Cornely OA, Mullane KM, Perfect JR, Thompson GR, Alangaden GJ, Brown JM, **Fredricks DN**, et al. 2016. Isavuconazole treatment for mucormycosis: a single-arm open-label trial and case-control analysis. *Lancet Infect Dis*. 2016; 16(7):828-37. doi: 10.1016/S1473-3099(16)00071-2.

Adam Geballe, MD

Associate Director, Division of Human Biology, Fred Hutch

Professor, Human Biology and

Clinical Research Divisions, Fred Hutch

Professor of Allergy and Infectious Diseases and Medicine, University of Washington

Adjunct Professor of Microbiology, University of Washington

Dr. Geballe is trained in medicine and molecular virology. His research has focused on gene specific and general translational control mechanisms used by viruses to facilitate replication and to overcome host defenses. Currently, he is studying multiple primate CMVs and HSV-1 and -2 with the aim of uncovering the molecular mechanisms and evolutionary trajectories through which large DNA viruses adapt to host defenses such as the broadly active host defense pathway mediated by the double-stranded RNA sensor Protein Kinase R and MxB. As well he is studying the regulation of KSHV latency.

Carpentier, KS., N.M. Esparo, S.J. Child, and **A.P. Geballe**. A single amino acid dictates Protein Kinase R susceptibility to unrelated viral antagonists. *PLoS Pathogens*. 2016;12(10):e1005966. doi: 10.1371/journal.ppat.1005966. PMID: PMC5079575

Hickson, S.E., D. Margineantu, D.M. Hockenbery, J.A. Simon, and **A.P. Geballe**. Inhibition of vaccinia

virus replication by nitazoxanide. *Virology*. 2018;518:398-405. doi: 10.1016/j.virol.2018.03.023. PMID: PMC5929478

Bayer, A., G. Brennan and **A.P. Geballe**. Adaptation by copy number variation in monopartite viruses. *Curr Opin Virol*. 2018;33:7-12. doi: 10.1016/j.coviro.2018.07.001. PMID: PMC6289852.

Duke, E.R., M. Boeckh, and **A.P. Geballe**. 2020. Cytomegalovirus. In: Encyclopedia of Gastroenterology, 2nd edition (E.J. Kuipers, ed) pp. 807-814.

Child, S.J., A.L. Greninger and **A.P. Geballe**. Rapid adaptation to human protein kinase R by a unique genomic rearrangement in rhesus cytomegalovirus. *PLoS Pathogens*. 2021;17(1):e1009088. doi: 10.1371/journal.ppat.1009088. PMID: PMC7864422

Ted Gooley, PhD

Professor, Clinical Research Division, Fred Hutch

Director, Clinical Biostatistics Program, Fred Hutch

Director, Biostatistics Shared Resource, Fred Hutch

Dr. Gooley is a Professor at Fred Hutch, where he has been a biostatistician in the Clinical Research Division for the past 24 years. Dr. Gooley's activities within the CRD include the design and analysis of experiments and clinical trials in HCT as well as the analysis of retrospective data in the field of HCT. He is a highly productive investigator with over 270 publications in peer-reviewed journals, many of these with fellows within VIDD and the CRD through various training grants. Access to competent statistical support is essential for both clinical and laboratory investigators and Dr. Gooley will be available to provide this support. In addition, he teaches a course to our fellows on the fundamentals of biostatistics and clinical trials.

Gooley TA, Leisenring W, Crowley J, Storer BE. Estimation of failure probabilities in the presence of competing risks: new representations of old

estimators. *Stat Med*. 1999;18:695-706. doi: 10.1002/(SICI)1097-0258(19990330)18:6<695::AID-SIM60>3.0.CO;2-O

Gooley T, Rajvanshi P, Schoch HJ, McDonald GB. Serum bilirubin levels and mortality after myeloablative allogeneic hematopoietic cell transplantation. *Hepatology*. 2005;41:345-352. doi: 10.1002/hep.20529

Storer BE, **Gooley T**, Jones MP. Adjusted estimates for time-to-event endpoints. *Lifetime Data Anal*. 2008;14:484-95. doi: 10.1007/s10985-008-9098-9 PMCID: PMC2660858

Gooley, T, Chien, JW, Pergam, SA, Hingorani, S, Sorrow, ML, Boeckh, M, Martin, PJ, Sandmaier, BM, Marr, KA, Appelbaum, FR, Storb, R, McDonald, GB. Reduced mortality after allogeneic hematopoietic cell transplantation. *N Engl J Med*. 2010;363:2091-101. doi: 10.1056/NEJMoa1004383 PMCID: PMC3017343

Alex Greninger, MD, PhD

Assistant Professor of Laboratory Medicine & Pathology, University of Washington
Associate Director, Clinical Virology and Retrovirology Laboratories, University of Washington/Fred Hutch

Dr. Greninger is an Assistant Professor of Laboratory Medicine & Pathology, and Assistant Director of the clinical virology laboratories with broad training in clinical pathology, virology, epidemiology, and immunology. He has experience in metagenomics for clinical diagnostics, genomics and proteomics of viral infections, and bacterial genomics, with a slant in his basic science laboratory toward mechanisms of replication of picornaviruses, paramyxoviruses, and herpesviruses. Dr. Greninger is also interested in enhancing the clinical laboratory's ability to help patients, and he directs central laboratories for the AIDS Clinical Trial Group and HIV Vaccine Trial Network. The clinical laboratory is a source of abundant data, providing a wealth of opportunity for research.

Casto AM, Roychoudhury P, Xie H, Selke S, Perchetti GA, Wofford H, Huang ML, Verjans GMGM, Gottlieb GS, Wald A, Jerome KR, Koelle DM, Johnston C, **Greninger AL**. Large, stable, contemporary interspecies recombination events in circulating human herpes simplex viruses. *J Infect Dis*. 2020;221(8):1271-1279. doi: 10.1093/infdis/jiz199. PMCID: PMC7325804.

Casto AM, Adler AL, Makhsous N, Crawford K, Qin X, Kuypers JM, Huang ML, Zerr DM, **Greninger AL**. Prospective real-time metagenomic sequencing during norovirus outbreak reveals discrete transmission clusters. *Clin Infect Dis*. 2019;69(6):941-948. doi: 10.1093/cid/ciy1020. PMCID: PMC6735836.

Iketani S, Shean R, Ferren M, Makhsous N, Aquino D, des Georges A, Rima B, Mathieu C, Porotto M, Moscona A, **Greninger AL**. Viral entry properties required for fitness in humans are lost through rapid genomic change during viral isolation. *mBio*. 2018;9(4):e00898-18. doi: 10.1128/mBio.00898-18. PMCID: PMC6030562.

Dalmat R, Makhsous N, Pepper G, Magaret A, Jerome KR, Wald A, **Greninger AL**. Limited marginal utility of deep sequencing for HIV drug resistance testing in the age of integrase inhibitors. *J Clin Microbiol*. 2018;56(12):e01443-18. doi: 10.1128/JCM.01443-18. PMCID: PMC6258839.

Thomas Hawn, MD, PhD

Professor of Allergy and Infectious Diseases and Medicine, University of Washington

Dr. Hawn is a Professor of Medicine at UW. He studies the innate immune response to intracellular pathogens. He uses a combination of molecular, cellular, and human genetic techniques to examine the genetic basis and mechanisms of human susceptibility to infectious diseases. His research includes gene function studies that are utilized in conjunction with human genetic analyses of single nucleotide DNA polymorphisms in innate immune response genes in subjects with different infections. Since establishing his laboratory in 2005, he has been the primary mentor for 14 post-doctoral fellows and a co-mentor for 4 post-doctoral fellows and 6 pre-doctoral students. He has mentored 10 previous fellows who obtained career development

awards including 8 who transitioned to junior faculty positions.

Simmons JD, Van PT, Stein CM, Chihota V, Ntshika T, Maenetje P, Peterson GJ, Reynolds A, Benchek P, Velen K, Fielding KL, Grant AD, Graustein AD, Nguyen FK, Seshadri C, Gottardo R, Mayanja-Kizza H, Wallis RS, Churchyard G, Boom WH, **Hawn TR**. (2021) Monocyte metabolic transcriptional programs associate with resistance to tuberculin skin test/interferon- γ release assay conversion. *J Clin Invest*. Jul 15;131(14):e140073. doi: 10.1172/JCI140073. PMID: 34111032.

Shah, JA, Musvosi, M, Shey, M, Horne, DJ, Wells, RD, Peterson, GJ, Cox, JS, Daya, M, Hoal, EG, Lin, L, Gottardo, R, Hanekom, WA, Scriba, TJ, Hatherill, M, **Hawn, TR**. (2017) A functional TOLLIP variant is associated with BCG-specific immune responses and tuberculosis. *Amer. J. Resp. Care and Critical Medicine*. 196:502-511. PMID 28463648. PMCID: PMC5564674.

Randhawa AK, Shey MS, Keyser A, Peixoto B, Wells RD, de Kock M, Lerumo L, Hughes J, Hussey G, Hawkridge A, Kaplan G, Hanekom WA, **Hawn TR**, and the SATVI team. Association of human TLR1 and TLR6 deficiency with altered immune responses to BCG vaccination in South African infants. *PLoS Pathog*. 2011;7:e1002174 doi: 10.1371/journal.ppat.1002174 PMCID: PMC3154845

Hawn TR, Verbon A, Lettinga KD, Zhao LP, Li SS, Laws RJ, Skerrett SJ, Beutler B, Schroeder L, Nachman A, Ozinsky A, Smith KD, Aderem A. A common dominant TLR5 stop codon polymorphism abolishes flagellin signaling and is associated with susceptibility to Legionnaires' Disease. *J Exp Med*. 2003;198:1563-1572. doi: 10.1084/jem.20031220 PMCID: PMC2194120

Geoffrey R. Hill, MD

José Carreras/E. Donnell Thomas Endowed Chair for Cancer Research

Professor, Clinical Research Division, Fred Hutchinson Cancer Research Center

Director of The Immunotherapy Integrated Research Center, Fred Hutchinson Cancer Research Center

Director of Hematopoietic Stem Cell Transplantation, Seattle Cancer Care Alliance
Professor of Medicine, University of Washington

Dr. Hill's laboratory focuses on transplant immunology and continues to span basic discovery research and translational clinical practice, utilizing cutting-edge immunological techniques including advanced cell and whole organism imaging, flow cytometry, proteomics and RNASeq. His studies have focused on addressing the major limitations of bone marrow transplantation, namely graft-versus-host disease (GVHD), opportunistic infection and relapse. Studies in the GVHD setting have focused on understanding the mechanisms of alloantigen presentation, T cell differentiation (both effector and regulatory) and cytokine biology where we have led the field with a number of pivotal late phase translational clinical studies underway. His work in opportunistic infections has focused on CMV and understanding the immunological requirements for virus control, developing the first models of CMV reactivation after allogeneic BMT that allow preclinical testing of immunomodulation strategies to improve pathogen-specific immunity.

Schuster IS, Wikstrom ME, Brizard G, Coudert JD, Estcourt MJ, Manzur M, O'Reilly LA, Smyth MJ, Trapani JA, **Hill GR**, Andoniou CE, Degli-Esposti MA. TRAIL+ NK cells control CD4 T cell responses during chronic viral infection to limit autoimmunity. *Immunity*. 2014;41(4):646-56. doi: 10.1016/j.immuni.2014.09.013.

Martins JP, Andoniou CE, Fleming P, Kuns RD, Daly S, Schuster IS, Varelias A, Tey SK, Degli-Esposti MA*, **Hill GR***. Strain-specific antibody therapy prevents cytomegalovirus reactivation after transplantation. *Science*. 2019;363(6424):288-293. doi: 10.1126/science.aat0066. (*contributed equally)

Koyama M, Mukhopadhyay P, Schuster I, et al., **Hill GR**. MHC class II antigen presentation by the intestinal epithelium initiates graft-versus-host disease and is influenced by the microbiota. *Immunity*. 2019;51(5):885-898.e7. doi: 10.1016/j.immuni.2019.08.011. PMCID: PMC6959419.

Yeh AC, Jagasia MH, Dahlman KB, Reddy A, Barone S, Olver SD, Chilson K, Onstad LE, Ensbey K, Samson L,

Kim TK, Varelias A, Zhang P, Newell EW, Irish JM, Lee SJ, **Hill GR**. Donor CMV exposure drives long-term CD57⁺ CD4 memory T cell inflation following allogeneic stem cell transplant.

Blood. 2021;138(26):2874-2885. doi: 10.1182/blood.2020009492. PMID: PMC8718626.

Degli-Esposti MA, **Hill GR**. Immune control of cytomegalovirus reactivation in stem cell transplantation. *Blood*. 2022;139(9):1277-1288. doi: 10.1182/blood.2020010028.

Joshua A Hill, MD

Assistant Professor, Vaccine and Infectious Disease and Clinical Research Divisions, Fred Hutch

Assistant Professor of Allergy and Infectious Diseases and Medicine, University of Washington

Dr. Joshua A. Hill is an Assistant Professor at the Fred Hutchinson Cancer Research Center (FHCRC) and the University of Washington (UW). His research program is focused on clinical and translational studies to improve preventive and treatment strategies for infections in patients receiving hematopoietic cell transplantations (HCT) and CAR-T cell therapies. Dr. Hill trained in Transplant Infectious Diseases at FHCRC and epidemiology/biostatistics at the Harvard School of Public Health. He serves as an attending physician on the Immunocompromised Host Infectious Diseases Service at the FHCRC, Seattle Cancer Care Alliance (SCCA), and UW Medical Center.

Hill JA, Li D, Hay KA, Green ML, Cherian S, Chen X, Riddell SR, Maloney DG, Boeckh M, Turtle CJ. Infectious Complications of CD19-Targeted Chimeric Antigen Receptor-Modified T Cell Immunotherapy. *Blood*. 2018;131(1):121-130. doi: 10.1182/blood-2017-07-793760. PMID: PMC5755046.

Walti CS, Krantz EM, Maalouf J, Boonyaratanakornkit J, Keane-Candib J, Joncas-Schronce L, Stevens-Ayers T, Dasgupta S, Taylor JJ, Hirayama AV, Bar M, Gardner RA, Cowan AJ, Green DJ, Boeckh MJ, Maloney DG, Turtle CJ, **Hill JA**. Antibodies against vaccine-preventable infections after CAR-T cell therapy for B cell

malignancies. *JCI Insight*. 2021;6(11):e146743. doi: 10.1172/jci.insight.146743. PMID: PMC8262349.

Hill JA, Koo S, Guzman Suarez BB, Ho VT, Cutler C, Koreth J, Armand P, Alyea EP 3rd, Baden LR, Antin JH, Soiffer RJ, Marty FM. Cord-blood hematopoietic stem cell transplant confers an increased risk for human herpesvirus-6-associated acute limbic encephalitis: a cohort analysis. *Biol Blood Marrow Transplant*. 2012;18(11):1638-48. doi: 10.1016/j.bbmt.2012.04.016. PMID: PMC3816521.

Hill JA, Mayer BT, Xie H, Leisenring WM, Huang ML, Stevens-Ayers T, Milano F, Delaney C, Sorrow ML, Sandmaier BM, Nichols G, Zerr DM, Jerome KR, Schiffer JT, Boeckh M. The cumulative burden of double-stranded DNA virus detection after allogeneic HCT is associated with increased mortality. *Blood*. 2017;129(16):2316-2325. doi: 10.1182/blood-2016-10-748426. PMID: PMC5399484.

Hill JA, Menon MP, Dhanireddy S, Wurfel MM, Green M, Jain R, Chan JD, Huang J, Bethune D, Turtle C, Johnston C, Xie H, Leisenring WM, Nina Kim H, Cheng GS. Tocilizumab in hospitalized patients with COVID-19: Clinical outcomes, inflammatory marker kinetics, and safety. *J Med Virol*. 2021;93(4):2270-2280. doi: 10.1002/jmv.26674. PMID: PMC7753799.

Ollivier Hyrien, PhD

Professor, Vaccine and Infectious Disease and Public Health Science Divisions, Fred Hutch

Dr. Hyrien is a Full Professor at Fred Hutch. He is trained in statistics, and his methodological research is focused on developing statistical and machine learning approaches as well as mathematical models to characterize immune responses to vaccination or infection using high-throughput and next generation sequencing data. His collaborative research includes designing pre-clinical and clinical trials to study vaccine and monoclonal antibodies for the prevention of infection from exposure to HIV and other pathogens. A major focus of his current work is on

studying evolution of the B cell repertoire and germline-targeting vaccines.

Hilchey SP, **Hyrien O**, Mosmann TR, Livingstone AM, Friedberg JW, Young F, Fisher RI, Kelleher RJ Jr, Bankert RB, Bernstein SH. Rituximab immunotherapy results in the induction of a lymphoma idiotype-specific T-cell response in patients with follicular lymphoma: support for a "vaccinal effect" of rituximab. *Blood*. 2009;113(16):3809-12. doi: 10.1182/blood-2008-10-185280. PMCID: PMC2670795.

Pattacini L, Woodward Davis A, Czartoski J, Mair F, Presnell S, Hughes SM, **Hyrien O**, Lentz GM, Kirby AC, Fialkow MF, Hladik F, Prlic M, Lund JM. A pro-inflammatory CD8⁺ T-cell subset patrols the cervicovaginal tract. *Mucosal Immunol*. 2019;12(5):1118-1129. doi: 10.1038/s41385-019-0186-9. PMCID: PMC6717561.

Hyrien O, Baran A. Fast nonparametric density-based clustering of large data sets using a stochastic approximation mean-shift algorithm. *J Comput Graph Stat*. 2016;25(3):899-916. doi: 10.1080/10618600.2015.1051625. PMCID: PMC5417725.

Hyrien O, Zand MS. A mixture model with dependent observations for the analysis of CSFE-labeling experiments. *Journal of the American Statistical Association*. 2008;103(481): 222–239. doi: 10.1198/016214507000000194

Keith Jerome, MD, PhD

Professor, Vaccine and Infectious Disease Division, Fred Hutch

Professor of Laboratory Medicine & Pathology, University of Washington

Head, Virology Division, University of Washington

Dr. Jerome is a Professor of Laboratory Medicine and Pathology and Head of the Virology Division at the UW as well as a Professor at Fred Hutch. His academic and clinical work focuses on the diagnosis of viral infections, and the development of gene therapy approaches to the cure of chronic viral infections. As head of the Virology Division, he is an

essential collaborator and mentor for many projects and trainees. He has successfully trained undergraduate students, graduate students, as well as postdoctoral scientist and fellows.

Stone D, Long KR, Loprieno MA, De Silva Felixge HS, Kenkel EJ, Liley RM, Rapp S, Roychoudhury P, Nguyen T, Stensland L, Colón-Thillet R, Klouser LM, Weber ND, Le C, Wagoner J, Goecker EA, Li AZ, Eichholz K, Corey L, Tyrrell DL, Greninger AL, Huang ML, Polyak SJ, Aubert M, Sagartz JE, **Jerome KR**. CRISPR-Cas9 gene editing of hepatitis B virus in chronically infected humanized mice. *Mol Ther Methods Clin Dev*. 2020;20:258-275. doi: 10.1016/j.omtm.2020.11.014. PMCID: PMC7803634.

Bedford T, Greninger AL, Roychoudhury P, Starita LM, Famulare M, Huang ML, Nalla A, Pepper G, Reinhardt A, Xie H, Shrestha L, Nguyen TN, Adler A, Brandstetter E, Cho S, Giroux D, Han PD, Fay K, Frazar CD, Ilcisin M, Lacombe K, Lee J, Kiavand A, Richardson M, Sibley TR, Truong M, Wolf CR, Nickerson DA, Rieder MJ, Englund JA, Seattle Flu Study Investigators, Hadfield J, Hodcroft EB, Huddleston J, Moncla LH, Müller NF, Neher RA, Deng X, Gu W, Federman S, Chiu C, Duchin JS, Gautom R, Melly G, Hiatt B, Dykema P, Lindquist S, Queen K, Tao Y, Uehara A, Tong S, MacCannell D, Armstrong GL, Baird GS, Chu HY, Shendure J, **Jerome KR**. Cryptic transmission of SARS-CoV-2 in Washington state. *Science*. 2020;370(6516):571-575. doi: 10.1126/science.abc0523. PMCID: PMC7810035.

Aubert M, Strongin DE, Roychoudhury P, Loprieno MA, Haick AK, Klouser LM, Stensland L, Huang ML, Makhous N, Tait A, De Silva Felixge HS, Galetto R, Duchateau P, Greninger AL, Stone D, **Jerome KR**. Gene editing and elimination of latent herpes simplex virus in vivo. *Nat Commun*. 2020;11(1):4148. doi: 10.1038/s41467-020-17936-5. PMCID: PMC7435201.

Randhawa AK, Fisher LH, Greninger AL, Li SS, Andriesen J, Corey L, **Jerome KR**. Changes in SARS-CoV-2 Positivity Rate in Outpatients in Seattle and Washington State, March 1-April 16, 2020. *JAMA*. 2020;323(22):2334-2336. doi: 10.1001/jama.2020.8097. PMCID: PMC7210505.

Christine Johnston, MD, MPH

Associate Professor of Allergy and Infectious Diseases and Medicine, University of Washington

Associate Program Director, Infectious Diseases Fellowship Training Program, University of Washington

Adjunct Associate Professor, Department of Laboratory Medicine and Pathology

Affiliate Investigator, Vaccine and Infectious Disease Division, Fred Hutchinson Cancer Research Center

Dr. Johnston is an infectious disease physician with over 15 years of experience conducting clinical research to study chronic viral infections, with a focus on herpesvirus. Her research focuses on the natural history and pathobiology of herpes simplex virus (HSV) infections, with the ultimate goal of creating new strategies to prevent and treat HSV. Her studies enroll participants into intensive specimen collection protocols to understand immunologic and virologic factors that are associated with variable clinical phenotypes of HSV infection. She works closely with a multidisciplinary group of laboratory and biostatistics colleagues. In addition, she served as PI for SARS-CoV-2 treatment and vaccine trials. As Associate Program Director of the ID Fellowship, she has experience mentoring fellows with a variety of interests and career paths.

Johnston C, Saracino M, Kuntz S, Magaret A, Selke S, Huang M, Schiffer JT, Koelle DM, Corey L, Wald A. Standard-dose and high-dose antiviral therapy for short episodes of genital HSV-2 reactivation: Three randomized, open-label, cross-over trials. *Lancet*. 2012;379(9816):641-7. doi: 10.1016/S0140-6736(11)61750-9. PMID: PMC3420069.

Johnston C, Zhu J, Jing L, Laing KJ, McClurkan C, Klock A, Diem K, Jin L, Stanaway J, Tronstein E, Kwok W, Huang M, Selke S, Fong Y, Magaret A, Koelle DM, Wald A, Corey L. Virologic and immunologic evidence of multifocal genital herpes simplex virus 2 infection. *J Virol*. 2014;88(9):4921-31. doi: 10.1128/JVI.03285-13. PMID: PMC3993786

Johnston C, Magaret A, Roychoudhury P, Greninger AL, Reeves D, Schiffer J, Jerome KR, Sather C, Diem K, Lingappa JR, Celum C, Koelle DM, Wald A. Dual-strain genital herpes simplex virus type 2 (HSV-2) infection in the US, Peru, and 8 countries in sub-Saharan Africa: A nested cross-sectional viral genotyping study. *PloS Med*. 2017;14(12):e1002475. doi: 10.1371/journal.pmed.1002475. PMID: PMC5744910

Dabestani N, Katz DA, Dombrowski J, Magaret A, Wald A, **Johnston C**. Time trends in first-episode genital herpes simplex virus infections in an urban sexually transmitted disease clinic. *Sex Transm Dis* 2019; 46(12):795-800. doi: 10.1097/OLQ.0000000000001076.

Johnston C, Brown ER, Stewart J, Stankiewicz Karita HC, Kissinger PJ, Dwyer J, Hosek S, Oyedele T, Paasche-Orlow MK, Paolino K, Heller KB, Leingang H, Haugen HS, Dong TQ, Bershteyn A, Sridhar AR, Poole J, Noseworthy PA, Ackerman MJ, Morrison S, Greninger AL, Huang M, Jerome KR, Wener MH, Wald A, Schiffer JT, Celum C, Chu HY, Barnabas RV, Baeten JM. Hydroxychloroquine with or without azithromycin for treatment of early SARS-CoV-2 infection among high-risk outpatient adults: A randomized clinical trial. *EClinicalMedicine*. 2021;33:100773. doi: 10.1016/j.eclinm.2021.100773. PMID: PMC7912360.

Christopher Johnston, PhD

Assistant Professor, Vaccine and Infectious Disease and Clinical Research Divisions, Fred Hutch

Dr. Johnston is an Assistant Professor at the Fred Hutch. His lab focuses on microbial epigenetics within the human microbiota, and the creation of broadly applicable technologies and methodologies to permit genetic engineering of virtually any cultivable bacterial species; massively expediting fundamental examinations of microbes relevant to health and disease. In 2017, he received an 'NIH Director's Transformative Research Award' to

support this effort. The long-term goal of his research is to generate a deeper functional understanding of ‘*what bacteria are capable of doing*’, to figure out ‘*how they are doing it*’, and subsequently use that information to engineer novel therapeutics and the next generation of microbe-based technologies for application in human medicine and bioengineering.

Johnston, C. D., Cotton S. L., Rittling S. R., Starr J. R., Borisy G., Dewhirst, F., Lemon K. P. Systematic evasion of the restriction-modification barrier in bacteria. *Proc Natl Acad Sci U S A*. 2019;116(23):11454-11459. doi: 10.1073/pnas.1820256116. PMCID: PMC6561282.

Juárez, J. F., Lecube-Azpeitia, B., Brown, S.L., **Johnston, C.D.**, Church, G.M. Biosensor libraries harness large classes of binding domains for construction of allosteric transcriptional regulators. *Nat Commun*. 2018;9(1):3101. doi: 10.1038/s41467-018-05525-6. PMCID: PMC6079105.

Johnston, C.D., Skeete, C.A., Fomenkov, A., Roberts, R.J., Rittling, S.R. Restriction modification mediated barriers to exogenous DNA uptake and incorporation employed by *Prevotella intermedia*. *PLoS One*. 2017;12(9): e0185234. doi: 10.1371/journal.pone.0185234. PMCID: PMC5608340

Johnston, C.D., Douarre, P.E., Soulimane, T., Pletzner, D., Weingart, H., MacSharry, J., Coffey, A., Sleator, R.D & O’Mahony, J. (2013). Codon optimization to improve expression of a *Mycobacterium avium* subsp. *paratuberculosis* specific membrane associated antigen by *Lactobacillus salivarius*. *FEMS Pathog Dis*. 2013; 68(1):27-38. doi: 10.1111/2049-632X.12040.

David Koelle, MD

Professor of Allergy and Infectious Diseases and Medicine, University of Washington
Adjunct Professor of Global Health, University of Washington
Joint Professor of Laboratory Medicine and Pathology, University of Washington

Affiliate, Vaccine and Infectious Disease Division, Fred Hutchinson Cancer Research Center

Affiliate, Benaroya Research Institute

Dr. Koelle has been mentoring pre-doctoral and post-doctoral MD and PHD scientists since joining the faculty in 1997. His lab is interested in the T cell immune responses to infections and vaccines, and particularly in herpes and tumor viruses and sexually transmitted infections. Pathogens include SARS-CoV-2, HSV, VZV, human herpesvirus 6, vaccinia, *Treponema pallidum*, *Mycobacterium tuberculosis*, and Merkel cell polyoma virus (MCPyV). Candidate HSV-1 and HSV-2 vaccine candidates have been identified, studied in mice and entered clinical trials. We are trying to harness T cells to treat Merkel cell carcinoma. We use pathogen genomic libraries and genome-spanning ORF sets to interrogate CD8 and CD4 T-cell responses to a very high level of definition. A specific focus is tissue resident memory T cells (TRM) at sites of infection, such as skin, the female genital tract, the cornea, trigeminal ganglia, and in tumors. A newer initiative is study of T-cell repertoires using single cell and bulk sequencing of T-cell receptor (TCR) hypervariable regions and expression of functional recombinant T-cell receptors. SARS-CoV-2 work includes detailed TCR sequencing of virus-specific T cells, epitope discovery, and measurement of T cell interactions with infected epithelial cells.

Elyanow R, Snyder TM, Dalai SC, Gittelman RM, Boonyaratanakornkit J, Wald A, Selke S, Wener MH, Morishima C, Greninger AL, Holbrook MR, Kaplan IM, Zahid HJ, Carlson JM, Baldo L, Manley T, Robins HS, **Koelle DM**. T-cell receptor sequencing identifies prior SARS-CoV-2 infection and correlates with neutralizing antibody titers and disease severity. *medRxiv* [Preprint]. 2021 Mar 22:2021.03.19.21251426. doi: 10.1101/2021.03.19.21251426. PMCID: PMC8010755.

Boonyaratanakornkit J, Morishima C, Selke S, Zamora D, McGuffin S, Shapiro AE, Campbell VL, McClurkan CL, Jing L, Gross R, Liang J, Postnikova E, Mazur S, Lukin VV, Chaudhary A, Das MK, Fink SL, Bryan A, Greninger AL, Jerome KR, Holbrook

MR, Gernsheimer TB, Wener MH, Wald A, **Koelle DM**. Clinical, laboratory, and temporal predictors of neutralizing antibodies against SARS-CoV-2 among COVID-19 convalescent plasma donor candidates. *J Clin Invest*. 2021;131(3):e144930. doi: 10.1172/JCI144930. PMID: PMC7843229.

Campbell VL, Nguyen L, Snoey E, McClurkan CL, Laing KJ, Dong L, Sette A, Lindestam Arlehamn CS, Altmann DM, Boyton RJ, Roby JA, Gale M Jr, Stone M, Busch MP, Norris PJ, **Koelle DM**. Proteome-Wide Zika Virus CD4 T Cell Epitope and HLA Restriction Determination. *Immunohorizons*. 2020;4(8):444-453. doi: 10.4049/immunohorizons.2000068. PMID: PMC7839664.

Jing L, Ott M, Church CD, Kulikauskas RM, Ibrani D, Iyer JG, Afanasiev OK, Colunga A, Cook MM, Xie H, Greninger AL, Paulson KG, Chapuis AG, Bhatia S, Nghiem P, **Koelle DM**. Prevalent and diverse intratumoral oncoprotein-specific CD8⁺ T cells within polyomavirus-driven Merkel cell carcinomas. *Cancer Immunol Res*. 2020;8(5):648-659. doi: 10.1158/2326-6066.CIR-19-0647. PMID: PMC7196523.

Hanson DJ, Tsvetkova O, Rerolle GF, Greninger AL, Sette A, Jing L, Campbell VL, **Koelle DM**. Genome-wide approach to the CD4 T-cell response to human herpesvirus 6B. *J Virol*. 2019;93(14):e00321-19. doi: 10.1128/JVI.00321-19. PMID: PMC6600184.

Peng T, Phasouk K, Bossard E, Klock A, Jin L, Laing KJ, Johnston C, Williams NA, Czartoski JL, Varon D, Long AN, Bielas JH, Snyder TM, Robins H, **Koelle DM**, McElrath MJ, Wald A, Corey L, Zhu J. Distinct populations of antigen-specific tissue-resident CD8⁺ T cells in human cervix mucosa. *JCI Insight*. 2021 Aug 9;6(15):e149950. doi: 10.1172/jci.insight.149950. PMID: PMC8410090

Nayak K, Jing L, Russell RM, Davies DH, Hermanson G, Molina DM, Liang X, Sherman DR, Kwok WW, Yang J, Kenneth J, Ahamed SF, Chandele A, Murali-Krishna K, **Koelle DM**. Identification of novel Mycobacterium tuberculosis CD4 T-cell antigens via high throughput proteome

scanning. *Tuberculosis (Edinb)*. 2015;95:275-287. doi: 10.1093/infdis/jiv164 PMID: PMC4559191

Jing L, Laing KJ, Dong L, Russell RM, Barlow RS, Haas JG, Ramchandani MS, Johnston C, Buus S, Redwood AJ, White KD, Mallal SA, Phillips EJ, Posavad CM, Wald A, **Koelle DM**. Extensive CD4 and CD8 cross-reactivity between alphaherpesviruses. *J Immunol*. 2016;196(5):2205-2218. doi: 10.4049/jimmunol.1502366. PMID: PMC4761520.

Wendy Leisenring, ScD

Professor, Clinical Research and Public Health Divisions, Fred Hutch

Dr. Leisenring is a Professor in the Clinical Biostatistics group at Fred Hutch, where she has collaborated with clinical scientists nearly three decades. Her work encompasses a variety of study types, including prospective and retrospective cohort studies and clinical trials, for which she plays a key role in design and analyses. Within the HCT domain, her projects span a wide range of topics, including infectious disease diagnosis, epidemiology, treatment, prevention and detection of long-term outcomes after HCT. Dr. Leisenring also leads the statistical center for the Childhood Cancer Survivor Study, which includes more than 20,000 survivors being studied for late effects of their cancer treatment. Dr. Leisenring is an essential resource to research fellows at the Fred Hutch while they work on their research projects; she provides mentoring on the collaborative process of working together with a statistician, formulating hypotheses, designing studies, gathering relevant data and carrying out analyses to answer compelling questions.

Zerr DM, Fann JR, Breiger D, Boeckh M, Adler AL, Xie H, Delaney C, Huang ML, Corey L, **Leisenring WM**. HHV-6 reactivation and its effect on delirium and cognitive functioning in hematopoietic cell transplantation recipients. *Blood*. 2011;117(19):5243-9. doi: 10.1182/blood-2010-10-316083 PMID: PMC3109545

Boeckh M, Nichols WG, Chemaly RF, Papanicolaou GA, Wingard JR, Xie H, Syrjala KL, Flowers MED,

Stevens-Ayers T, Jerome KR, **Leisenring WM**. Valganciclovir for the prevention of complications of late cytomegalovirus infection after allogeneic hematopoietic cell transplantation: a randomized trial. *Ann Intern Med*. 2015;162(1): 1-10. doi: 10.7326/M13-2729 PMID: PMC4465336

Hill JA, Zamora D, Xie H, Thur LA, Delaney C, Dahlberg A, Pergam SA, **Leisenring WM**, Boeckh M, Milano F. Delayed-onset cytomegalovirus infection is frequent after discontinuing letermovir in cord blood transplant recipients. *Blood Adv*. 2021 Aug 24;5(16):3113-3119. PMID: 34402885; PMID: PMC8405185.

Krull KR, McDonald A, Goodman P, Vukadinovich C, Ford J, **Leisenring WM**, Chow EJ, Robison LL, Armstrong GT. Impact of COVID-19 pandemic on a large cohort of adult survivors of childhood cancer. *Pediatr Blood Cancer*. 2021 Nov;68(11):e29324. Epub 2021 Aug 31. PMID: 34467648; PMID: PMC8463488.

Zamora D, Duke ER, Xie H, Edmison BC, Akoto B, Kiener R, Stevens-Ayers T, Wagner R, Mielcarek M, **Leisenring WM**, Jerome KR, Schiffer JT, Finak G, De Rosa SC, Boeckh M. Cytomegalovirus-specific T-cell reconstitution following letermovir prophylaxis after hematopoietic cell transplantation. *Blood*. 2021 Jul 8;138(1):34-43. PMID: 33657225; PMID: PMC8493975.

Ogimi C, Xie H, Waghmare A, Ueda Oshima M, Mallhi KK, Jerome KR, **Leisenring WM**, Englund JA, Boeckh M. Risk factors for seasonal human coronavirus lower respiratory tract infection after hematopoietic cell transplantation. *Blood Adv*. 2021 Apr 13;5(7):1903-1914. PMID: 33792629; PMID: PMC8015796.

Hill JA, Menon MP, Dhanireddy S, Wurfel MM, Green M, Jain R, Chan JD, Huang J, Bethune D, Turtle C, Johnston C, Xie H, **Leisenring WM**, Nina Kim H, Cheng GS. (2020). Tocilizumab in hospitalized patients with COVID-19: Clinical outcomes, inflammatory marker kinetics, and safety. *J Med Virol*. 10.1002/jmv.26674, PMC7753799.

Hanson DJ, Xie H, Zerr DM, **Leisenring WM**, Jerome KR, Huang ML, Stevens-Ayers T, Boeckh M, Koelle DM, Hill JA. (2020). Donor-derived CD4+ T cells and HHV-6B reactivation after allogeneic hematopoietic cell transplantation. *J Infect Dis*, jiaa422, PMID: 32663845.

Foord AM, Cushing-Haugen KL, Boeckh MJ, Carpenter PA, Flowers MED, Lee SJ, **Leisenring WM**, Mueller BA, Hill JA, Chow EJ. (2020). Late infectious complications in hematopoietic cell transplantation survivors: a population-based study. *Blood Adv*. 4(7), 1232-1241, PMC7160274.

Ajit Limaye, MD

Professor of Medicine and Laboratory Medicine & Pathology, University of Washington
Director, Solid Organ Transplant Infectious Disease Program, University of Washington
Affiliate Investigator, Vaccine and Infectious Disease Division, Fred Hutch

Dr. Limaye is the Director of Solid Organ Transplant Infectious Disease Program. His research focuses on viral infections in transplantation, with particular emphasis on the epidemiology and management of CMV, BK virus, and respiratory viruses. Prior to becoming the Director of SOT ID he served as co-Director of the Clinical Microbiology laboratory at UW. He has a strong track of record in clinical trial conduct, including trials of all phases and observational studies. He is the PI of an investigator-initiated multicenter NIH supported randomized trial of CMV prevention in critically ill patients and a trial of CMV prevention strategies in liver transplant recipients. He has a long track record of training undergraduates, graduate students and fellows since 2000. Dr. Limaye will be a co-leader of Track 1.

Limaye AP, Babu TM, Boeckh M. Progress and challenges in the prevention, diagnosis, and management of cytomegalovirus infection in transplantation. *Clin Microbiol Rev*. 2020;34(1):e00043-19. doi: 10.1128/CMR.00043-19. PMID: PMC7920732.

Kates OS, Haydel BM, Florman SS, Rana MM, Chaudhry ZS, Ramesh MS, Safa K, Kotton CN,

Blumberg EA, Besharatian BD, Tanna SD, Ison MG, Malinis M, Azar MM, Rakita RM, Morillas JA, Majeed A, Sait AS, Spaggiari M, Hemmige V, Mehta SA, Neumann H, Badami A, Goldman JD, Lala A, Hemmersbach-Miller M, McCort ME, Bajrovic V, Ortiz-Bautista C, Friedman-Moraco R, Sehgal S, Lease ED, Fisher CE, **Limaye AP**; UW COVID-19 SOT Study Team. Coronavirus Disease 2019 in Solid Organ Transplant: A Multicenter Cohort Study. *Clin Infect Dis*. 2021 Dec 6;73(11):e4090-e4099. doi: 10.1093/cid/ciaa1097. PMID: PMC7454362.

Singh N, Winston DJ, Razonable RR, Lyon GM, Silveira FP, Wagener MM, Stevens-Ayers T, Edmison B, Boeckh M, **Limaye AP**. Effect of preemptive therapy vs antiviral prophylaxis on cytomegalovirus disease in Ssronegative liver transplant recipients with seropositive donors: A randomized clinical trial. *JAMA*. 2020 Apr 14;323(14):1378-1387. doi: 10.1001/jama.2020.3138. PMID: PMC7157180

Fisher CE, Alexander J, Bhattacharya R, Rakita RM, Kirby KA, Boeckh M, **Limaye AP**. Sensitivity of blood and tissue diagnostics for gastrointestinal cytomegalovirus disease in solid organ transplant recipients. *Transpl Infect Dis*. 2016;18(3):372-80. doi: 10.1111/tid.12531

Fisher CE, Preiksaitis CM, Lease ED, Edelman J, Kirby KA, Leisenring WM, Raghu G, Boeckh M, **Limaye AP**. Symptomatic respiratory virus infection and chronic lung allograft dysfunction. *Clin Infect Dis*. 2016;62(3):313-9. doi: 10.1093/cid/civ871 PMID: PMC4706632

Limaye AP, Kirby KA, Rubenfeld GD, Leisenring WM, Bulger EM, Neff MJ, Gibran NS, Huang ML, Santo Hayes TK, Corey L, Boeckh M. Cytomegalovirus reactivation in critically ill immunocompetent patients. *JAMA*. 2008;300(4):413-22. doi:10.1001/jama.300.4.41. PMID: PMC2774501.

Catherine Liu, MD

Professor, Vaccine and Infectious Disease and Clinical Research Divisions, Fred Hutch

Associate Professor of Allergy and Infectious Diseases and Medicine, University of Washington Director, Antimicrobial Stewardship and Outpatient Antimicrobial Therapy Programs, Seattle Cancer Care Alliance

Dr. Liu serves as Director of the Antimicrobial Stewardship and Outpatient Parenteral Antimicrobial Therapy Programs and the Associate Director of Infection Prevention at the Seattle Cancer Care Alliance. She joined the faculty at Fred Hutch and UW in 2017 from the University of California, San Francisco where she served on faculty for 9 years. Her goal is to optimize antibiotic use to prevent the emergence of drug-resistant organisms and achieve the best clinical outcomes for patients. Her research focuses on antimicrobial resistance, antimicrobial and diagnostic stewardship among cancer and hematopoietic cell transplant patients. Projects aim to identify opportunities and strategies to prevent and optimize management of infections among cancer patients. She has an interest in clinical guideline development to improve patient care and standard practice and has participated in guideline development on a local and national level. She has successfully mentored numerous students, residents, and fellows on a variety of projects.

Stohs E, MacAllister T, Pergam SA, Krantz E, Jain R, Sweet A, **Liu C**. Unintended consequences of pre-transplant VRE screening on antimicrobial stewardship among allogeneic hematopoietic cell transplant recipients. *Infection Control and Hospital Epidemiology* 2018;39:730-33. doi: 10.1017/ice.2018.43.

Krantz E, Zier J, Stohs EJ, Ogimi C, Sweet A, Marquis S, Klaassen J, Pergam S, **Liu C**. Antibiotic prescribing and respiratory viral testing for acute upper respiratory infections among adult patients at an ambulatory cancer center. *Clinical Infectious Diseases*. 2020;70(7):1421-1428. doi: 10.1093/cid/ciz409. PMID: PMC7108137.

Liu C, Lan K, Krantz E, Kim HN, Zier J, Bryson-Cahn C, Chan JD, Jain R, Lynch JB, Pergam SA, Pottinger PS, Sweet A, Whimbey E, Bryan A. Improving appropriate diagnosis

of *Clostridioides difficile* infection through an enteric pathogen order set with computerized clinical decision support: An interrupted time series analysis. *Open Forum Infectious Diseases*, 2020 Aug 21;7(10):ofaa366. doi: 10.1093/ofid/ofaa366. PMID: PMC7566360.

Imlay H, Krantz EM, Stohs EJ, Lan KF, Zier J, Kim HN, Rakita RM, Limaye AP, Wald A, Pergam SA, **Liu C**. Reported β -lactam and other antibiotic allergies in solid organ and hematopoietic cell transplant recipients. *Clin Infect Dis*. 2020 ;71(7):1587-1594. doi: 10.1093/cid/ciz1025. PMID: PMC8241219.

Kates OS, Krantz EM, Lee J, Klassen J, Morris J, Mezheritsky I, Sweet A, Tverdek T, Loggers ET, Pergam SA, **Liu C**. Association of Physician Orders for Life-Sustaining Treatment (POLST) with inpatient antimicrobial use at end of life in patients with cancer. *Open Forum Infect Dis*. 2021; 8(8):ofab361. doi: 10.1093/ofid/ofab361. PMID: PMC8360239.

Evan Newell, Ph.D.

Associate Professor, Vaccine and Infectious Disease and Public Health Sciences Divisions, Fred Hutch. Adjunct Associated Professor, Department of Laboratory Medicine and Pathology, University of Washington.

Dr. Newell is an Associate Professor at Fred Hutch and Adjunct Associate Professor at University of Washington. His research focuses on understanding the human T cell mediated immune response to infectious disease and cancer. His lab has developed novel systems for identifying and thoroughly characterizing antigen-specific T cells derived from human blood and tissue samples. This included the development of combinatorial peptide-MHC tetramer staining, which allows for multiplexed assessment of up to hundreds of T cell antigen specificities in a single sample, and the first application of mass cytometry (CyTOF) to deeply probe the phenotypic and functional characteristics of antigen specific T cells. His lab applies mass cytometry, flow cytometry, single-cell sequencing and TCR sequencing for human and mouse immune profiling applications. Throughout this work, the lab also has a keen interest in developing

better ways to visualize and quantitatively compare high dimensional datasets.

Newell EW, Sigal N, Nair N, Kidd BA, Greenberg HB, Davis MM. Combinatorial tetramer staining and mass cytometry analysis facilitate T-cell epitope mapping and characterization. *Nature Biotechnology*. 2013, 31(7): 623-629. doi: 10.1038/nbt.2593 PMID: PMC3796952

Simoni Y, Becht E, Fehlings M, Loh CY, ..., Tan DSW, Tan IB, **Newell EW**. Bystander CD8(+) T cells are abundant and phenotypically distinct in human tumour infiltrates. *Nature*. 2018;557(7706):575-579. doi: 10.1038/s41586-018-0130-2.

Wong W, Ong D, Lim FS, Teng L, ..., Ginhoux F, Alicia Curotto de Lafaille M, **Newell EW**. A high dimensional atlas of human T cell diversity reveals tissue-specific trafficking and cytokine signatures. *Immunity* (2016). PMID: 27521270

Ch'ng MHY, Lim MQ, Rouers A, Becht E, Lee B, MacAry PA, Lye DC, Leo YS, Jinmiao Chen J, Katja Fink K, Rivino L, **Newell EW**. Large Scale HLA Tetramer Tracking of T Cells Throughout Dengue Infection Reveals Broad Acute Activation and Differentiation into Two Memory Cell Fates. *Immunity* 2019. PMID: 31757672

Cheng Y, Gunasegaran B, Singh HD, Dutertre C.-A., ... Zhai W, Choo SP, **Newell EW**. Distinct Tumor-Resident Memory HBV-specific T Cell Responses Correlate with Relapse-Free Survival in Patients with HBV-Associated Hepatocellular Carcinoma. *Immunity*, Aug 10;54(8):1825-1840.e7. PMID: 34270940

Becht E, McInnes L, Healy J, Dutertre AC, Kwok IWH, Ng LG, Ginhoux F, **Newell EW**. Dimensionality reduction for visualizing single-cell data using UMAP. *Nature Biotechnology*. 2018 Dec 3. PMID: 30531897

Steven Pergam, MD, MPH

Professor, Vaccine and Infectious Disease and Clinical Research Divisions, Fred Hutch

Associate Professor of Allergy and Infectious Diseases and Medicine, University of Washington
Director, Infection Prevention, Seattle Cancer Care Alliance

Dr. Pergam is a Professor in the Vaccine and Infectious Disease and Clinical Research Divisions of Fred Hutch and an Associate Professor at the UW. He also serves as Director of Infection Prevention at the FHCRC/Seattle Cancer Care Alliance. His current research interests involve infection prevention in immunosuppressed hosts. Dr. Pergam's research group focuses on the epidemiology of major pathogens, antimicrobial stewardship, and on the development of novel prevention strategies for community and healthcare-associated infections in cancer and hematopoietic cell transplant patients. He is specifically interested in the interplay between the immune response, the microbiome, bacterial and viral infections in the respiratory and gastrointestinal systems, and their association with inflammatory complications (e.g. GVHD, mucositis). Dr. Pergam's research group has developed novel data and expertise in patient quality and safety in high-risk immunosuppressed patients. Dr. Pergam has a long track record of mentorship and expertise in epidemiology, clinical trial design, and statistical analyses. He is part of the FDA committee that votes on COVID vaccines and is interested in vaccines in immunosuppressed patients.

Lind ML, Roncaioli S, Liu C, Bryan A, Sweet A, Tverdek F, Sorrow M, Phipps AI, **Pergam SA**. Are hematopoietic cell transplant recipients with Gram-negative bacteremia spending more time outpatient while on intravenous antibiotics? Addressing trends over 10 years at a single center. *Immun Inflamm Dis*. 2021 Jul 21. doi: 10.1002/iid3.486 PMID: 34289529

Woodfield MC, **Pergam SA**, Shah PD. Cocooning against COVID-19: The argument for vaccinating caregivers of patients with cancer. *Cancer*. 2021 Apr 23. doi: 10.1002/cnrc.33598. PMID: 33891713 [Editorial]

Flores LE, Frontera WR, Andrasik MP, del Rio C, Mondriguez Gonzalez A, Price SA, Krantz EM, **Pergam SA***, Silver JK*. Assessment of the Inclusion of Racial and Ethnic Minority Groups, Female, and Older Individuals in Vaccine Clinical Trials *JAMA Netw Open*. 2021 Feb 1;4(2):e2037640. doi: 10.1001/jamanetworkopen.2020.37640. PMID: 33606033 [Original] (*co-senior authors)

Lind ML, Mooney SJ, Carone M, Althouse BM, Liu C, Evans LE, Patel K, Vo P, **Pergam SA***, Phipps AI*. Development and Validation of a Machine Learning Model to Predict Bacterial Sepsis among Immunocompromised Stem Cell Transplant Recipients. *JAMA Network Open*. 2021 Apr 1;4(4):e214514. doi: 10.1001/jamanetworkopen.2021.4514. PMID: 33871619 (*co-senior authors)

Sosa-Moreno A, Narita M, Spitters C, Swetky M, Podczervinski S, Lind ML, Holmberg L, Edelstein R, Liu C, **Pergam SA**. A Targeted Screening Program for Latent TB Infection among Hematopoietic Cell Transplant Recipients. *Open Forum Infectious Diseases* June 2020 *Clin Infect Dis*. 2020 Jun 16:ciaa761. doi: 10.1093/cid/ciaa761. PMID: 32548613 [Original] PMC: 7348235

Braun I, Abrams D, Blanksy S, **Pergam SA**. Cannabis and the Cancer Patient. *J Natl Cancer Inst Monogr*. 2021 Nov 28;2021(58):68-77. doi: 10.1093/jncimonographs/lgab012. PMID: 34850899

Warren Phipps, MD, MPH

Associate Professor, Vaccine and Infectious Disease Division, Fred Hutch
Associate Professor, Allergy and Infectious Diseases and Medicine, University of Washington
Medical Director, Uganda Cancer Institute-Fred Hutch Collaboration

Over the last 12 years, Dr. Phipps has served as the Uganda Cancer Institute (UCI) – Fred Hutchinson Cancer Research Center (Fred Hutch) Collaboration and oversees the program's research activities on infection-related cancers in Kampala,

Uganda. His research focuses on HIV-associated malignancies, with a particular emphasis on human herpesvirus-8 (HHV-8) virology and the pathogenesis of Kaposi sarcoma (KS), among the most common HIV-associated malignancy worldwide. Dr. Phipps also studies the impact of HIV and antiretroviral therapy on cancer incidence and outcomes in Uganda, and provides clinical care to cancer patients with infection complications at the UCI.

Phipps W, Ssewankambo F, Nguyen H, Saracino M, Wald A, Corey L, Orem J, Kambugu A, Casper C. Gender differences in clinical presentation and outcomes of epidemic Kaposi sarcoma in Uganda. *PLoS One*. 2010;5(11):e13936. doi: 10.1371/journal.pone.0013936 PMID: PMC2980479.

Okuku F, Krantz EM, Kafeero J, Kamya MR, Orem J, Casper C, **Phipps W**. Evaluation of a predictive staging model for HIV-associated Kaposi sarcoma in Uganda. *J Acquir Immune Defic Syndr*. 2017;74(5):548-554. doi: 10.1097/QAI.0000000000001286 PMID: PMC5340582.

Bender Ignacio R, Ghadrshenas M, Low D, Orem J, Casper C, **Phipps W**. HIV status and associated clinical characteristics among adult patients with cancer at the Uganda Cancer Institute. *J Glob Oncol*. 2018;4:1-10. doi: 10.1200/JGO.17.00112 PMID: PMC6181185.

Rose T, Bruce GA, Barcy S, Fitzgibbon M, Matsumoto L, Ikamo I, Casper C, Orem J, **Phipps W**. Quantitative RNAseq analysis of Ugandan KS tumors reveals KSHV gene expression dominated by transcription from the LTd downstream latency promoter. *PLOS Pathogens* 2018;14(12):e1007441. doi: 10.1371/journal.ppat.1007441 PMID: PMC6312348.

Phipps W, Kansiime R, Stevenson P, Orem J, Casper C, Morrow RA. Peer Mentoring at the Uganda Cancer Institute: A Novel Model for Career Development of Clinician-Scientists in Resource-Limited Settings. *J Glob Oncol*. 2018 Sep;4:1-11. doi: 10.1200/JGO.17.00134 PMID: PMC6223430

Lubwama M, **Phipps W**, Najjuka C, Kajumbula H, Ddunga H, Kambugu J, Bwanga F. Bacteremia in febrile cancer patients in Uganda. *BMC Res Notes* 12(1):464, 2019. DOI: 10.1186/s13104-019-4520-9. PMID: PMC6668181

Martin Prlic, PhD

Associate Professor, Vaccine and Infectious Disease Division, Fred Hutch
Affiliate Associate Professor, Department of Global Health and Department of Immunology, University of Washington

Dr. Prlic primarily studies T cell and innate-like T cell responses in mucosal tissues, with a particular interest in understanding how these cells function in different inflammatory environments, including infections and cancer. By defining the functional plasticity and functional potential of T cells in health and a range of different disease states, he aims to understand how to manipulate these cells to our advantage. Dr. Prlic's goal is to understand the molecular basis of cell activation and differentiation to learn how to manipulate the cells for therapeutic purposes and ultimately improve human health.

Mair F, Erickson JS, Voillet V, Simoni Y, Bi T, Tyznik AJ, Martin J, Gottardo R, Newell EW and **Prlic M**. A targeted multi-omic analysis approach measures protein expression and low abundance transcripts on the single cell level. *Cell Rep*. 2020 Apr 7;31(1):107499. doi: 10.1016/j.celrep.2020.03.063.

Frutoso M, Mair F, **Prlic M**. NKp46-based 27-color phenotyping to define Natural Killer cells isolated from human tumor tissues *Cytometry A*. 2020 Oct;97(10):1052-1056. doi: 10.1002/cyto.a.24230. Epub 2020 Oct 8. PMID: 32978859

Woodward Davis AS, Vick SC, Pattacini L, Voillet V, Hughes SM, Lentz GM, Kirby AC, Fialkow MF, Gottardo R, Hladik F, Lund JM, **Prlic M**. The human memory T cell compartment changes across tissues of the female reproductive tract. *Mucosal Immunol*. 2021 Jul;14(4):862-872. doi: 10.1038/s41385-021-00406-6. Epub 2021 May 5. PMID: 33953338

Maurice NJ, Berner J, Taber AK, Zehn D, **Prlic M**. Inflammatory signals are sufficient to elicit TOX expression in mouse and human CD8 T cells. *JCI Insight*

2021 Jul 8;6(13):150744. doi: 10.1172/jci.insight.150744. PMID: 34032638

Vick SC, Frutoso M, Mair F, Konecny AJ, Greene E, Wolf CR, Logue JK, Boonyaratanakornkit J, Gottardo R, Schiffer JT, Chu HY, **Prlic M**, Lund JM. A differential regulatory T cell signature distinguishes the immune landscape of COVID-19 hospitalized patients from those hospitalized with other respiratory viral infections. *Sci Adv.* 2021 Nov 12;7(46):eabj0274. doi: 10.1126/sciadv.abj0274. Epub 2021 Nov 10. PMID: 34757794

Joshua Schiffer, MD, MSc

Professor, Vaccine and Infectious Disease and Clinical Research Divisions, Fred Hutch
Associate Professor of Allergy and Infectious Diseases and Medicine, University of Washington

Dr. Schiffer is an Associate Professor in VIDD at the Fred Hutch and Associate Professor at UW. His scientific program bridges laboratory-based studies with mechanistic mathematical models to capture dynamic interactions between viral pathogens and the human immune system. He is R01 supported and has an outstanding publication and mentoring record. A major focus has been on the complex kinetics of HSV-2 reactivations in the genital tract. Current research areas include modelling: SARS-CoV-2 viral dynamics and transmission; simulation of antiviral therapy clinical trials for dose optimization; strategies to achieve cure of HIV; approaches to tissue-resident T-cells within three-dimensional microenvironments; and shifts in the human microbiome and viral dynamics in childhood human herpes virus infections.

Schiffer JT, Swan DA, Magaret A, Corey L, Wald A, Ossig J, Ruebsamen-Schaeff H, Stoelben S, Timmler B, Zimmerman H, Melhem MR, Van Wart SA, Rubino CM, Birkmann A. Mathematical modeling of herpes simplex virus-2 suppression with pritelivir predicts trial outcomes. *Sci Transl Med.* 2016;11(6):e0155124. doi: 10.1371/journal.pone.0155124 PMID: PMC4902308

Reeves DB, Duke ER, Wagner TA, Palmer SE, Spivak AM, **Schiffer JT**. A majority of HIV

persistence during antiretroviral therapy is due to infected cell proliferation. *Nature Commun*, 2018 Nov 16; 9(1):4811. PMCID: PMC6240116.

Cardozo-Ojeda EF, Duke ER, Peterson CW, Reeves DB, Mayer BT, Kiem HP, **Schiffer JT**. Thresholds for post-rebound SHIV control after CCR5 gene-edited autologous hematopoietic cell transplantation. *ELife*, 2021 Jan 12;10:e57646. PMCID: PMC7803377.

Goyal A, Cardozo-Ojeda EF, **Schiffer JT**. Potency and timing of antiviral therapy as determinants of duration of SARS-CoV-2 shedding and intensity of inflammatory response. *Science Advances* 2020 Nov 20. Doi: 10.1126/sciadv.abc7112. PMID: 33024978.

Goyal A, Reeves DB, Cardozo-Ojeda EF, **Schiffer JT***, Mayer BT*. Viral load and contact heterogeneity predict SARS-CoV-2 transmission and super-spreading events. *eLife*. 2021 Feb 23; 10:e63537. doi: 10.7554/eLife.63537. (*co-last author)

Roychoudhury P, Swan DA, Duke ER, Corey L, Zhu J, Davé VA, Richert-Spuhler LE, Lund JM, Prlic M, **Schiffer JT**. Tissue-resident T cell derived cytokines eliminate herpes simplex virus-2 infected cells. *J Clin Invest.* 2020 130(6):2903-19. PMID: 32125285.

Hill JA, Mayer BT, Xie H, Leisenring WM, Huang ML, Stevens-Ayers T, Milano F, Delaney C, Jerome KR, Zerr DM, Nichols G, Boeckh M, **Schiffer JT**. Kinetics of Double-Stranded DNA Viremia after Allogeneic Hematopoietic Cell Transplantation. *Clin Infect Dis.* 2018 Jan 18;doi: 10.1093/cid/cix804. PMCID: PMC5850428.

Duke E, Williamson BD, Borate B, Golob J, Wychera C, Stevens-Ayers T, Huang ML, Cossrow N, Wan H, Mast TC, Marks MA, Flowers M, Jerome KR, Corey L, Gilbert PB, **Schiffer JT**, Boeckh M. Cytomegalovirus viral load kinetics as surrogate endpoints after allogeneic transplantation. *J Clin Invest.* 2020 Sep; 133960. doi: 10.1172/JCI133960. PMID: 32970635.

Justin Taylor, PhD

Associate Professor, Vaccine and Infectious Disease, Fred Hutch

Affiliate Assistant Professor of Global Health and Immunology, University of Washington

Most vaccines provide protection by inducing the production of antibodies that can bind to a pathogen and block infection. Unfortunately, there are many dangerous viruses in which the development of a vaccine has been elusive despite decades of research. These failures highlight gaps in knowledge about the type of cell that can produce antibodies, the B cell. The Taylor lab has undertaken two approaches to help protect people from infection. In one approach, they aim to inform vaccine design by gaining a deeper understanding about the mechanisms limiting the generation of a protective B cell response. To do this, they study B cell responses in humans and murine models beginning with the rare pathogen-specific “naïve” B cells present prior to the vaccination using an enrichment method they recently developed. Their second approach is to bypass vaccination and use genetic engineering to generate B cells that produce the types of protective antibodies that vaccination aims to generate.

Boonyaratanakornkit J, Weidle C, Singh S, Bakthavatsalam R, Perkins J, Stewart-Jones GBE, Kwong PD, McGuire AT, Pancera M, **Taylor JJ**. Protective Antibodies Against Human Parainfluenza Virus Type III Infection. *mAbs*. 13(1):1912884, 2021 [PMC8078717]

Steach HR, DeBuysscher BL, Schwartz A, Boonyaratanakornkit J, Baker ML, Tooley MR, Pease NA, **Taylor JJ**. Cross-reactivity with self-antigen tunes the functional potential of naïve B cells specific for foreign antigens. *J. Immunol*. 204(3):498-509, 2020 [PMC6981075]

Bancroft T, DeBuysscher BL, Weidle C, Schwartz A, Wall A, Gray MD, Feng J, Steach HR, Fitzpatrick KS, Gewe MM, Skog PD, Doyle-Cooper C, Ota T, Strong RK, Nemazee D, Pancera M, Stamatatos L, McGuire AT, **Taylor JJ**. Detection and activation of HIV broadly neutralizing antibody precursor B cells

using anti-idiotypes. *J Exp Med*. 216(10):2331-2347, 2019 [PMC6780997]

Moffett HF, Harms CK, Fitzpatrick KS, Tooley MR, Boonyaratanakornkit J, **Taylor JJ**. B cells engineered to express pathogen-specific antibodies protect against infection. *Sci Immunol*. 4(35), 2019 [PMC6913193]

Cameron Turtle, MD

Associate Professor, Clinical Research Division; Anderson Family Endowed Chair for Immunotherapy, Fred Hutch

Professor of Medical Oncology, University of Washington

Dr. Turtle is an Associate Professor in the Clinical Research Division at Fred Hutch and an Associate Professor in the Division of Oncology at the UW. His laboratory is focused on understanding the characteristics of distinct subsets of human CD8+ memory T cells, their potential utility for tumor immunotherapy, and their role in immune reconstitution and GVHD after HCT. His lab has extensive expertise in the isolation, culture, genetic modification, and propagation of conventional and innate-like T cells, and is highly proficient in the phenotypic, transcriptional, and functional analysis of human T cell subsets in healthy individuals and cancer patients. As PI and Investigational New Drug (IND) Sponsor of an ongoing clinical trial to evaluate therapy of CD19+ B cell malignancies by adoptive transfer of central memory CD8+ T cells that are lentivirally engineered to express a CD19-specific chimeric antigen receptor (CAR) he can offer clinical, laboratory and regulatory experience to trainees (Tracks 2 and 3).

Turtle CJ, Swanson HM, Fujii N, Estey EH, Riddell SR. A distinct subset of self-renewing human memory CD8+ T cells survives cytotoxic chemotherapy. *Immunity*. 2009;31(5):834-844. doi: 10.1016/j.immuni.2009.09.015 PMC2789980

Turtle CJ, Delrow J, Joslyn RC, Swanson HM, Basom R, Tabellini L, Delaney C, Heimfeld S, Hansen JA, Riddell SR. Innate signals overcome acquired TCR signaling pathway regulation and govern the fate of human CD161(hi) CD8alpha(+)

semi-invariant T cells. *Blood*. 2011;118(10):2752-2762. doi: 10.1182/blood-2011-02-334698 PMID: PMC3172793

Turtle CJ, Hanafi LA, Berger C, Gooley TA, Cherian S, Hudecek M, Sommermeyer D, Melville K, Pender B, Budiarto TM, Robinson E, Steevens NN, Chaney C, Soma L, Chen X, Yeung C, Wood B, Li D, Cao J, Heimfeld S, Jensen MC, Riddell SR, Maloney DG. CD19 CAR-T cells of defined CD4+:CD8+ composition in adult B cell ALL patients. *J Clin Invest*. 2016;26(6):2123-38. doi: 10.1172/JCI85309 PMID: PMC4887159

Turtle CJ, Hanafi LA, Berger C, Hudecek M, Pender B, Robinson E, Hawkins R, Chaney C, Cherian S, Chen X, Soma L, Wood B, Li D, Heimfeld S, Riddell SR, Maloney DG. Immunotherapy of non-Hodgkin's lymphoma with a defined ratio of CD8+ and CD4+ CD19-specific chimeric antigen receptor-modified T cells. *Sci Transl Med*. 2016 ;8(355):355ra116. doi: 10.1126/scitranslmed.aaf8621 PMID: PMC5045301

Gardner R, Wu D, Cherian S, Fang M, Hanafi LA, Finney O, Smithers H, Jensen MC, Riddell SR, Maloney DG, **Turtle CJ**. Acquisition of a CD19-negative myeloid phenotype allows immune escape of MLL-rearranged B-ALL from CD19 CAR-T-cell therapy. *Blood*. 2016;127(20):2406-10. doi: 10.1182/blood-2015-08-665547 PMID: PMC4874221

Alpana Waghmare, MD

Assistant Professor of Pediatrics, University of Washington

Assistant Professor, Vaccine and Infectious Disease Division, Fred Hutch

Dr. Waghmare's research is in the field of translational infectious diseases, with a particular focus on respiratory viral infections. Her interest in viral infections in immunocompromised hosts stems from her experiences as a clinician, where she witnessed the impact of respiratory viral infections in vulnerable populations. Dr. Waghmare translated her interest in respiratory viruses into clinical research projects including the investigation of risk

factors for RSV-associated mortality and the use of a novel antiviral for parainfluenza virus infection. While these pathogens, she began to appreciate the impact of an often-overlooked respiratory pathogen, human rhinovirus. Dr. Waghmare's current research interests involve evaluating biomarkers for disease severity in HCT recipients with rhinovirus infection and she been awarded a K23 award from the National Institute of Allergy and Infectious Diseases to pursue this work.

Waghmare A, Campbell AP, Xie H, Seo S, Kuypers J, Leisenring W, Jerome KR, Englund JA, Boeckh M. Respiratory syncytial virus lower respiratory disease in hematopoietic cell transplant recipients: viral RNA detection in blood, antiviral treatment, and clinical outcomes. *Clin Infect Dis*. 2013;57(12):1731-1741. doi: 10.1093/cid/cit639 PMID: PMC3840404

Waghmare A, Wagner T, Andrews R, Smith S, Kuypers J, Boeckh M, Moss R, Englund JA. Successful treatment of parainfluenza virus respiratory tract infection with DAS181 in 4 immunocompromised children. *J Pediatric Infect Dis Soc*. 2015;4(2):114-118. doi: 10.1093/jpids/piu039 PMID: PMC4501511

Waghmare A, Pergam SA, Jerome KR, Englund JA, Boeckh M, Kuypers J. Clinical disease due to enterovirus D68 in adult hematologic malignancy patients and hematopoietic cell transplant recipients. *Blood*. 2015;125(11):1724-1729. doi: 10.1182/blood-2014-12-616516 PMID: PMC4357580

Waghmare A, Englund JA, Boeckh M. How I treat respiratory viral infections in the setting of intensive chemotherapy or hematopoietic cell transplantation. *Blood*. 2016;127(22):2682-92. doi: 10.1182/blood-2016-01-634873 PMID: PMC4891952

Anna Wald, MD, MPH

Professor of Allergy and Infectious Diseases and Medicine, Epidemiology and Laboratory Medicine & Pathology, University of Washington

Professor, Vaccine and Infectious Disease Division, Fred Hutch
Head, Allergy and Infectious Diseases Division, University of Washington
Director, Virology Research Clinic, University of Washington

Dr. Wald is head of the UW Division of Allergy and Infectious Diseases and the Director of the UW Virology Research Clinic. Her clinical research has centered on HSV-2 infections, but also includes other viral pathogens as well as vaccine studies. Her current NIH support includes VTEU funding from NIAID as part of the Infectious Diseases Clinical Research Consortium and Sexually Transmitted Infections Collaborative Research Center that focuses on developing a syphilis vaccine. She has additional funding from NCI to evaluate HPV vaccine for high grade neoplasia of the genital and anal tract in women and men. In the past, she has received a K24 award from NIAID for mentoring early stage investigators. In the last 2 years, her research has pivoted to clinical trials of COVID-19 vaccines as well as studies to evaluate the virological course and the immune response to natural infection and vaccines. She has been a colleague and a collaborator of Dr. Boeckh for more than 2 decades, and they have successfully co-mentored many trainees.

Boonyaratanakornkit J, Morishima C, Selke S, Zamora D, McGuffin S, Shapiro AE, Campbell VL, McClurkan CL, Jing L, Gross R, Liang J, Postnikova E, Mazur S, Chaudhary A, Das MK, Fink SL, Bryan A, Greninger AL, Jerome KR, Holbrook MR, Gernsheimer TB, Wener MH, **Wald A***, Koelle DM*. Clinical, laboratory, and temporal predictors of neutralizing antibodies to SARS-CoV-2 after COVID-19. (*co-senior authors) J Clin Invest. 2021;131(3):e144930.

Ford ES*, Sholukh AM*, Boytz RM, Carmack SS, Burton E, Klock A, Phasouk K, Peng T, Johnston C, **Wald A**, Zhu J, Corey L. B cells, antibody-secreting cells and virus-specific antibodies respond to HSV-2 reactivation in skin. J Clin Invest 2021 Mar 30;142088. (*co-first authors)

Stankiewicz, Karita HC, Dong TQ, Johnston C, Neuzil KM, Paasche-Orlow MK, Kissinger PJ,

Bershteyn A, Thorpe LE, Deming M, Kottkamp A, Laufer M, Landovitz RJ, Luk A, Hoffman R, Roychoudhury P, Magaret CA, Greninger AL, Huang ML, Jerome KR, Wener M, Celum C, Chu HY, Baeten JM, **Wald A**, Barnabas RV, Brown ER. Trajectory of viral RNA load among persons with incident SARS-CoV-2 G614 infection (Wuhan strain) in relation to COVID-19 symptom onset and severity. JAMA Network Open in press.

Mugo N, Eckert L, Odero L, Gakuo S, Ngure K, Celum C, Baeten JM, Barnabas R, **Wald A**. **Antibody responses to prophylactic quadrivalent human papillomavirus vaccine at 48 months among HIV-infected girls and boys ages 9-14 in Kenya, Africa. Vaccine.** 2021 Jan 20:S0264-410X(20)31587-5. doi: 10.1016/j.vaccine.2020.12.020. Online ahead of print.

Michael Wu, PhD

Professor, Public Health Sciences Division, Fred Hutch

Affiliate Associate Professor of Biostatistics, University of Washington

Dr. Wu is a Professor at Fred Hutch. His group develops and applies cutting edges statistical and computational approaches for complex omics data, including microbiome, metagenomic, genomics and other lab assay based data. Several approaches now represent the standard within many analytic pipelines and have been used to identify thousands of novel findings. Dr. Wu also has a deep commitment to mentoring and training of students, fellows, and post docs, including service on F and K grants.

Ling W, Zhao N, Plantinga A, Launer L, Fodor A, Meyer K, **Wu MC** (2021). Powerful and robust non-parametric association testing for microbiome data via a zero-inflated quantile approach (ZINQ). *Microbiome*, 9(1):181. PMC8414689

Ling W, Qi Y, Hua X, **Wu MC** (2021). Deep ensemble learning over the microbial phylogenetic tree (DeepEn-Phy)". *IEEE Bioinformatics and Biomedicine (BIBM)*.

Plantinga A, Chen J, Jenq RR, **Wu MC** (2019). Pldist: Ecological dissimilarities for paired and longitudinal microbiome association analysis. *Bioinformatics*, 35(19):3567-3575. PMC6761933

Wu MC, Lee S, Cai T, Li Y, Boehnke M., Lin, X. (2011). Rare variant association testing for sequencing data with the sequence kernel association test (SKAT). *The American Journal of Human Genetics*, 89, 82-93. PMC3135811

Danielle Zerr, MD, MPH

Professor of Pediatrics, University of Washington

Affiliate Investigator, Vaccine and Infectious Disease Division, Fred Hutch

Dr. Zerr is a Professor of Pediatric Infectious Diseases and Division Chief of Pediatric Infectious Disease at Seattle Children's Hospital. She is an Infectious Disease scientist with training in epidemiology, a successful track record in mentoring, and experience in leading clinical research focused on human herpesvirus 6 (HHV-6) infection and healthcare-associated infections. She has been the PI or co-investigator of several NIH-, university-, and industry-sponsored grants, including an NIH career development award and R01s focused on the epidemiology of HHV-6, and healthcare associated infections. She is a productive investigator that has conducted multiple retrospective as well as several large prospective clinical studies, a portion of which have involved immunocompromised populations.

Zerr DM, Fann JR, Breiger D, Boeckh M, Adler A, Xie H, Delaney C, Huang M, Corey L, Leisenring WM. HHV-6 reactivation and its effect on delirium and cognitive functioning in hematopoietic cell transplantation recipients. *Blood*. 2011;117(19):5243-49. doi: 10.1182/blood-2010-10-316083 PMID: PMC310954

Hill JA, Boeckh M, Leisenring WM, Xie H, Adler AL, Huang M-L, Fann JR, Delaney C, **Zerr DM**. Human herpesvirus 6B reactivation and delirium are frequent and associated events after cord blood transplantation. *Bone Marrow Transplant*.

2015;50(10):1348-51. doi: 10.1038/bmt.2015.154 PMID: PMC4486349

Zerr DM, Miles-Jay A, Kronman MP, Zhou C, Adler AL, Haaland W, Weissman SJ, Elward A, Newland J, Selvarangan R, Sullivan KV, Zaoutis T, Qin X. Previous antibiotic exposure increases risk of infection with extended-spectrum-beta-lactamase- and AmpC-producing *Escherichia coli* and *Klebsiella pneumoniae* in pediatric patients. *Antimicrob Agents Chemother*. 2016;60(7):4237-43 doi: 10.1128/AAC.00187-16 PMID: PMC4914666

Miles-Jay A, Weissman SJ, Adler AL, Tchesnokova V, Sokurenko EV, Baseman JG, **Zerr DM**. Epidemiology and antimicrobial resistance characteristics of the ST131-H30 subclone among extraintestinal *Escherichia coli* collected from US children. *Clin Infect Dis*. 2018 Jan;66:411-10. PMID: 29020219

Phan TL, Carlin K, Ljungman P, Politikos I, Boussiotis V, Boeckh M, Shaffer ML, **Zerr DM**. Human Herpesvirus-6B (HHV-6B) Reactivation is a Risk Factor for Grade 2-4 Acute Graft-Versus-Host Disease (aGVHD) after Hematopoietic Stem Cell Transplantation (HCT): A Systematic Review and Meta-Analysis. Submitted *Biol Blood Marrow Transplant*. 2018 Apr. [Epub ahead of print] PMID: 29684567

Berrondo C, Bettinger B, Katz CB, Bauer J, Shnorhavorian M, **Zerr DM**. Validation of an electronic surveillance algorithm to identify patients with post-operative surgical site infections using national surgical quality improvement program pediatric data. *J Pediatr Infect Dis Soc*. 2020 Dec 31;9(6):680-685. doi: 10.1093/jpids/piz095.

Addetia A, Greninger AL, Adler A, Yuan S, Makhsous N, Qin X, **Zerr DM**. A novel, widespread qacA allele results in reduced chlorhexidine susceptibility in *Staphylococcus epidermidis*. *Antimicrob Agents Chemother*. 2019 Apr 15. [Epub ahead of print] PMID: 30988144

Zerr DM, Milstone AM, Dvorak CC, Adler AL, Chen L, Villaluna D, Dang H, Qin X, Addetia A, Yu LC, Conway Keller M, Esbenshade AJ, August KJ, Fisher BT, Sung L. Chlorhexidine gluconate bathing in children with

cancer or those undergoing hematopoietic stem cell transplantation: A double-blinded randomized controlled trial from the Children's Oncology Group. *Cancer*. 2020 Oct 20;. doi: 10.1002/cncr.33271. [Epub ahead of print] PMID: 33079403.

Miles-Jay A, Weissman SJ, Adler AL, Baseman JG, **Zerr DM**. Whole genome sequencing detects minimal clustering among *Escherichia coli* Sequence Type 131 H30 isolates collected from U.S. children's hospitals. *J Pediatric Infec Dis Soc*. 2020 Mar 17 :piaa023. doi: 10.1093/jpids/piaa023. Online ahead of print.. 2020. PMID: 32185378

Jia Zhu, PhD

Associate Professor, Vaccine and Infectious Disease Division, Fred Hutch

Research Associate Professor, Department of Laboratory Medicine & Pathology, University of Washington

Dr. Zhu has appointments at both Fred Hutch and the University of Washington, where she leads a team that studies the tissue-based immune response to herpes simplex virus (HSV) infection in human skin. She has spent most of her career focused on understanding intricate interactions between humans and HSV, which can be successfully suppressed in a healthy host but can cause more severe complications in immunocompromised individuals. Early on she developed novel laboratory tools to detect how immune cells behave in genital tissues during the active and latent phases of herpes infection. These pivotal studies showed that CD8⁺ T cells remain at previous sites of HSV lesions and accumulate near sensory nerve endings, where reactivating HSV is released. Currently, the lab is using high dimensional multiplex immunofluorescence staining in combination with transcriptional analysis to characterize the spatial-temporal relationship between T cells and the surrounding network of immune and non-immune cells in the tissue. She has developed many research partnerships and her group is highly collaborative.

Zhu J, Peng T, Johnston C, Phasouk K, Kask AS, Klock A, Jin L, Diem K, Koelle DM, Wald A, Robins H, Corey L. Immune surveillance by CD8 $\alpha\alpha$ ⁺ skin-resident T cells in human herpes virus infection.

Nature. 2013 May 23;497(7450):494-7. doi: 10.1038/nature12110.

Peng T, Chanthaphavong RS, Sun S, Trigilio JA, Phasouk K, Jin L, Layton ED, Li AZ, Correnti CE, De van der Schueren W, Vazquez J, O'Day DR, Glass IA, Knipe DM, Wald A, Corey L, **Zhu J**. Keratinocytes produce IL-17c to protect peripheral nervous systems during human HSV-2 reactivation. *J Exp Med*. 2017 Aug 7;214(8):2315-2329. doi: 10.1084/jem.20160581.

Peng T, Phasouk K, Bossard E, Klock A, Jin L, Laing KJ, Johnston C, Williams NA, Czartoski JL, Varon D, Long AN, Bielas JH, Snyder TM, Robins H, Koelle DM, McElrath MJ, Wald A, Corey L, **Zhu J**. Distinct populations of antigen-specific tissue-resident CD8⁺ T cells in human cervix mucosa. *JCI Insight*. 2021 Aug 9;6(15):e149950. doi: 10.1172/jci.insight.149950.

Peng T, Phasouk K, Sodroski CN, Sun S, Hwangbo Y, Layton ED, Jin L, Klock A, Diem K, Magaret AS, Jing L, Laing K, Li A, Huang ML, Mertens M, Johnston C, Jerome KR, Koelle DM, Wald A, Knipe DM, Corey L, **Zhu J**. Tissue-Resident-Memory CD8⁺ T Cells Bridge Innate Immune Responses in Neighboring Epithelial Cells to Control Human Genital Herpes. *Front Immunol*. 2021 Sep 6;12:735643. doi: 10.3389/fimmu.2021.735643.

Additional Information

For further information, please contact:

Program Director

Michael Boeckh

Program Administrator

Limei Fan

Correspondence:

Infectious Disease Sciences
Vaccine and Infectious Disease Division
1100 Fairview Ave. N.
E4-100
PO Box 19024
Seattle, WA 98109-1024
(206) 667-6702

Email requests for program information to:

IDadmin@fredhutch.org