

A Stochastic Newsletter

SPRING 2026



FACULTY HIGHLIGHTS

Li Hsu's group saw the launch of [MyGeneRisk](#), a free online tool for assessing colorectal cancer risk using lifestyle information and optional genetic data was launched.



Ruth Etzioni was awarded the Early Detection Impact award by CRUK. She was also featured in both the New York Times and STAT's coverage of GRAIL's new NHS study results and the future of Multi Cancer Detection.

Megan Othus and **Ruth Etzioni's** [SeattleStatGROWS](#) undergraduate program started interviewing candidates for its fourth cycle. The program's mission is to engage and support future researchers in statistics and data science.



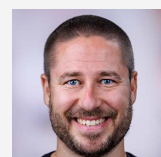
Jessica Li was awarded the Mortimer Spiegelman award by the American Public Health Association and the Donald and Janet K. Guthrie Endowed Chair in Statistics by FHCC. In addition, two papers from the JSB lab were accepted to RECOMB 2026.

Bo Yu, Wei Sun, Li Hsu, and others just published a [preprint](#) from the [MorPhiC](#) collaboration on a causal gene regulatory network framework combining co-expression + knockout modeling.



Mike Leblanc presented the [2026 Ross L. Prentice Lecture](#), Evolving Designs and Analyses of Publicly Funded Cancer Clinical Trials, at UW. In addition, his SWOG team published a major new JAMA Oncology paper showing a 42% cure rate among follicular lymphoma patients after 15 years of follow-up.

The **Zhao Group** released new software designed to evaluate stage shift and mortality projections. Yingqi also conducted a seminar, Addressing Real-world Challenges in Cancer Early Detection and Therapeutic Studies, at the University of Michigan Department of Biostatistics



Jeff Leek's team has developed the R package [scorcher](#), which aims to make AI and ML tools more accessible for cancer investigators. His team is also involved with [piloting](#) the Cancer AI Alliance (CAIA) infrastructure, a federated learning platform, with 3 other cancer centers.

Ziding Feng, Carolyn Rutter, and **Ruth Etzioni** participated in the Cancer Screening Intelligence for the Future symposium at Bell Harbor Conference Center to discuss multi-cancer detection tests.



PAPERS AND PREPRINTS

MorPhiC/Sun Lab

Characterization of Cancer-Reactive T Cells and Neoantigen-specific T Cell Receptors. *bioRxiv*

Li Hsu Group

Assessing the Benefits and Burdens of Preventive Interventions. *Stat Med*.

Whole Blood Transcriptomic Analysis of Sickle Cell Trait. *Eur J Haematol*.

JSB/Li Lab

scDesignPop generates realistic population-scale single-cell RNA-seq for power analysis, benchmarking, and privacy protection. *bioRxiv*

Nullstrap-DE: A General Framework for Calibrating FDR and Preserving Power in DE Methods, with Applications to DESeq2 and edgeR. *bioRxiv*

Etzioni Lab

Estimating the Opportunity for Early Detection of Ovarian Cancer Using Individual-Patient Data from a Large Randomized Controlled Trial. *Cancer Epidemiol Biomarkers Prev*.

Chongzhi Di

Comparisons of Physical Activity and Sedentary Behavior Measurements from the ActiGraph, International Physical Activity Questionnaire, and Fitbit in Women with History of Breast Cancer. *J Phys Act Health*.

Charles Kooperberg

Polygenic risk score for type 2 diabetes shows context-dependent effects across populations. *Nat Commun*.

Leek Group

What's the Weight? Estimating Controlled Outcome Differences in Complex Surveys for Health Disparities Research. *Stat Med*.

Ziding Feng

Validation of longitudinal biomarker screening algorithms for HCC detection in patients with cirrhosis. *Hepatol Commun*.

SWOG

Treatment of Follicular Lymphoma with CHOP and Anti-CD20 Therapy: 15-Year Follow-Up of the SWOG S0016 Trial. *JAMA Oncol*.

Yingqi Zhao Group

Two-step error-controlling classifiers with application to cost-effective disease diagnosis. *Statistics in Medicine*

Wu Group

Detecting clinically relevant topological structures in multiplexed spatial proteomics imaging using TopKAT. *Patterns*

Neoadjuvant PD-1 blockade in patients with surgically resectable desmoplastic melanoma (SWOG S1512 cohort A). *Nature Cancer*

Jing Ma

Inference for microbe-metabolite association networks using a latent graph model. *Biometrics*

Lue Ping Zhao

Profiling Associations Between IGHG-FCGR Ligand-Receptor Interactions and Disease Progression from Stage 1 and 2 to Stage 3 Type 1 Diabetes.

Yingye Zheng

Combining Serum Prostate Health Index with Urinary PCA3 and TMPRSS2:ERG RNA Testing Improves Detection of Clinically Significant Prostate Cancer. *JU Open Plus*

A Stochastic Newsletter

SPRING 2026

BIOSTAT @ ENAR2026

The ENAR 2026 Spring Meeting included several FHCC Biostat faculty:
Jessica Li: "Definitions and Applications of Spatial Niches in Spatial Omics Data Analyses: A Summary and Discussion"

Yingqi Zhao: "AI-Enhanced Clinical Decision-Making: Innovative Statistical Approaches for Clinical Applications"

Mike Wu: "Accommodating Differential Read Depth in Analyses of Virome Diversity"

Stephen Salerno, Awan Afiaz, and Jeff Leek: "Scorcher: An R Package to Democratize Building and Fitting Torch Deep Learning Models."

Stephen Salerno: Tutorial 5: "Introduction to Prediction-based Inference: Methods and Applications"

UPCOMING EVENTS

March 25, 2025	Biostat Seminar, Wanyu Liu, M1-A303
April 8, 2026:	Biostat Faculty Meeting, M4-A805
April 15, 2026:	Spring Social, point view room
April 22, 2026	Biostat Seminar, Gary Zhao
April 29, 2026:	IIRC/Biostat Seminar, Li Zhang, M1-A303
May 5, 2026:	AI Statistics Symposium, Steam Plant
May 12, 2026:	AI Statistics Workshop, Arnold Building
May 13, 2026	Biostat Faculty Meeting, M4-A805
May 20, 2026	UW/Biostat Seminar, Anil Palepu, M1-A307
May 27, 2026	Biostat Seminar, Yanyao Yi
June 3, 2026	Biostat Seminar, Kevin Lin, M4-A805
June 10, 2026	Biostat Faculty Meeting, M3-A805
June 14-17, 2026	WNAR, Pullman, WA
June 24-Aug 19, 2026	SeattleStatGROWS
June 29, 2026	Visiting Faculty Seminar, Jean Feng, M1-A303
June 29-July 1	DaSEH Codeathon
August 1-6, 2026:	Joint Statistical Meetings, Boston, MA

SOCIAL MEDIA

Share your news through our new Biostat social media accounts! We welcome paper announcements, award news, upcoming talks, and anything else you'd like the broader community to see:

 [Fred Hutch Biostatistics Program showcase](#)

 [@biostats_fhcc](#)

 [@fredhutchbiostat.bsky.social](#)

Our recently launched [YouTube channel](#) will include recordings of our Biostat Seminar series and faculty talks. Let us know if you have any talks you would like us to add or link.

NEW: BSR → BC3

The Biostatistics Shared Resource recently changed its name to the "[Biostatistics Consulting and Collaboration Center](#)" (BC3). Watch for Directors Mike Wu and Jing Ma, who will be re-introducing the service to various departments Center-wide.

POSTDOC CORNER

From Pittsburgh to Oxford, Iowa to Edinburgh, and Wisconsin to Singapore, our new postdocs bring with them the breadth and depth of a truly global scientific community.

Siyuan Chen, JSB/Li Lab
Penn State University



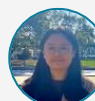
Saishi Cui, Sun Lab
Drexel University



Yuzheng Dun, Wu Group
Johns Hopkins



Xinyi Jiang, Kooperberg Lab
University of Edinburgh



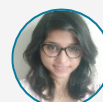
Arnold Johnsen, Zhao Group
University of Minnesota



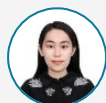
Mari Johnson, Hsu Group
University of Oxford



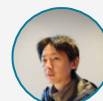
Poorbita Kundu, Ma Lab
University of California, Davis



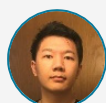
Crystal Liu, JSB/Li Lab
National University of Singapore



Jiaming Qiu, Zheng & Zhao Labs
Iowa State University



Siqi Shen, Hsu & Sun Labs
University of Wisconsin



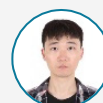
Changhu Wang, JSB/Li Lab
Peking University



Yifei Wang, Hsu Group
Southern Methodist University



Fan Yang, JSB/ Li Lab
University of Pittsburgh



Bo Yu, Sun Lab
Tsinghua University

