

Updated November 7, 2022



Fred Hutch
Cancer Center

Respiratory Virus Screening – Job Aide

1. **Patients and Visitors** must wear a **medical grade** mask. Masks must cover nose and mouth.
 - If the patient has a cloth or homemade mask, or an ill-fitting or soiled medical mask, instruct the patient to perform hand hygiene, take off personal mask and place into paper bag, don surgical mask and perform hand hygiene.

Patients and visitors must be screened. Ask each person:

2. Have you tested positive or been exposed to someone with COVID-19 in the last **10 days**?
3. In the past 2 days, have you had:
 - Fever or chills
 - New cough, shortness of breath or difficulty breathing
 - New sore throat, runny nose or other cold symptoms
 - New loss of taste or smell
 - New muscle aches

SEE NEXT PAGE FOR DETAILS

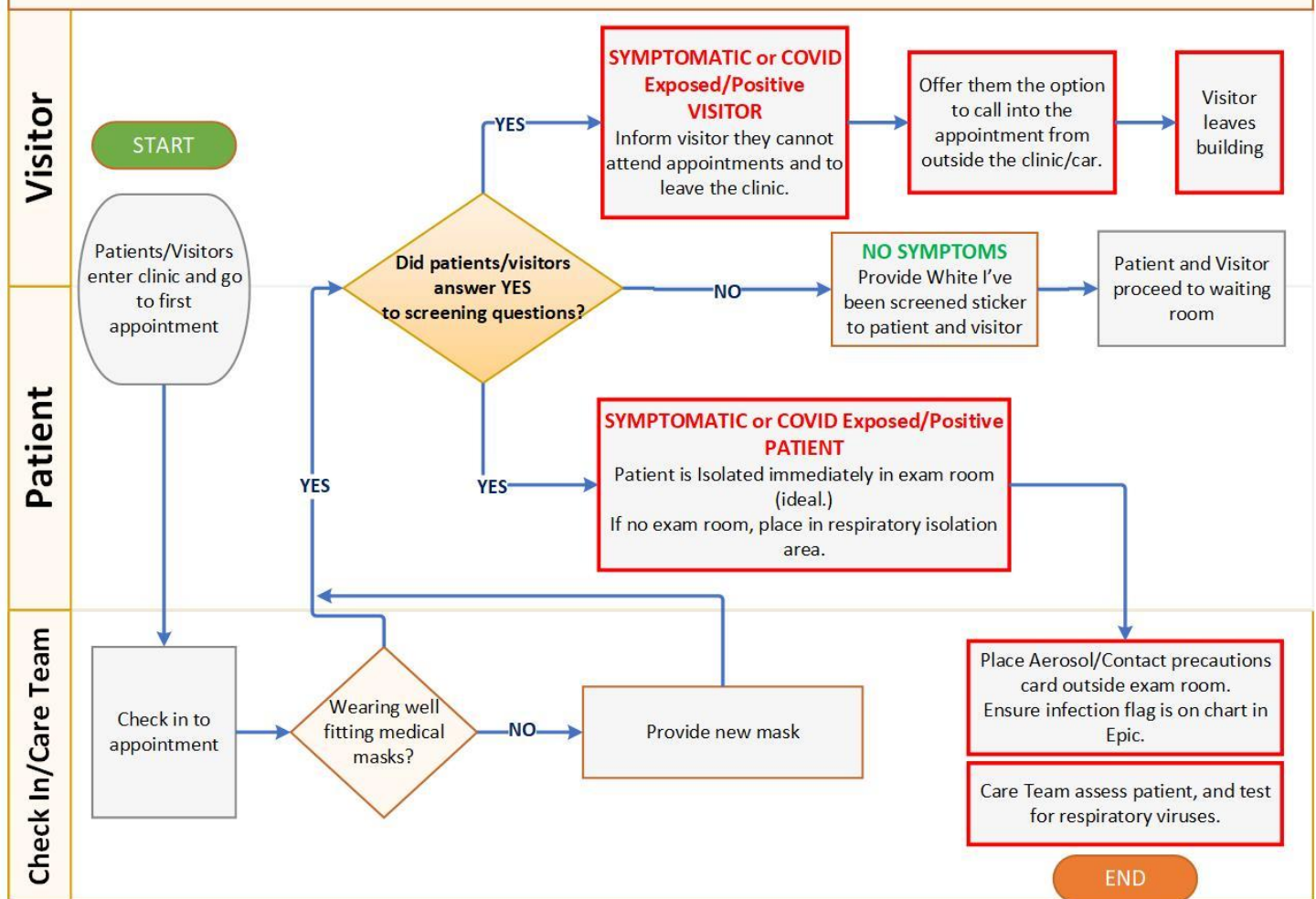


Fred Hutch
Cancer Center

Updated November 7, 2022

Respiratory Virus Screening – Job Aide

Community Sites - Respiratory Virus Screening at Appointment Check-In – Updated 11/7/2022



References:

[COVID-19 Resources Intranet Page](#)

[Universal Mask Policy](#) and [Mask Accommodation/Refusal Policy](#)

[Standard and Isolation/Transmission-Based precautions](#)

[Management of patients with confirmed, suspected or exposure to COVID-19](#)